

QUICK COUPLINGS PNEUMATIC SERIE

**FESCOLO**

Fescolo Pneumatic Co.,Ltd.

Sales Manager:Jeffrey Bu

Postal code: 315100

Tel.: +86 574 89258005

Cell phone.: +86 0 15057491870

Email: sales@fescolo.com

Add.: #98 Tiangao Lane, Yinzhou, Ningbo, Zhejiang, China



Company Profile

Fescolo pneumatic Co., Ltd. , found in 2001, which specializes in pneumatic products such as air cylinders, solenoid valves, pneumatic control valves, filter regulators, air hose, fittings and so on. We have an excellent technical research department, first-class production technology and equipments. All our workshops are in accordance with 6S principles. At present, we have 18 production lines, more than 2,000 production equipments, annual turnover of more than 20 million US dollars.

Until now, our customers are more than 80 countries around the world. Our major products include air cylinders, solenoid valves, pneumatic control valves, filter regulators, air hoses and fittings. The applications involve industrial automation, medical treatment, sanitary ware, automobile manufacturing, wire and cable, horticulture and agricultural irrigation etc. Furthermore, we accept ODM and OEM customization services, and can design logo and label for our customers.

Our chief technical engineer, Antonio Bonifazi from Italy, had worked as a technical engineer in Aigiro Group and NSG Group for many years. He has fruitful experience and unique technology in mechanical automation industry. Each product from Fescolo will go through 3 inspections at least before shipping, in order to guarantee every product you receive is perfect. The raw materials we use are the best and latest, never recycled or old materials. Basically, all our molds are developed and designed by ourselves, which ensures the stability of product quality. At present, 70% workshops realize automatic production, which greatly increases the production capacity. Compared with last year, the annual production capacity has increased by more than 50%. In addition, there are a large number of workblanks and semi-finished products available in stock. From order confirmation to delivery, usually it takes only 3~10 working days. We have stable freight forwarders by sea, air and train, so that we can deliver the goods to our customers with the best price and service.

Most of our products includes a one-year or 6-month warranty. Many replacement parts are available in stocked they can be shipped within 3days. Our technical sales team experienced and reliable can provide best services from pre-sales to after-sale, as well as technical support and consultancy. We are on a mission to create a green and healthy production environment for our employees, to provide our customers with professional and efficient services, energy-saving and stable quality products.

Warmly welcome and opening up the boundaries of our communication. Sincerely, we are looking forward to your cooperation in the near future. FESCOLO, your trusted partner forever.



Table of contents

1

American Type Quick Coupling

TR series Tru-Flate Type Quick Coupling----- 04

IN series Industrial Type Quick Coupling ----- 07

IH series High Pressure Type Quick Coupling ----- 10

IM series Milton American Type Quick Coupling ----- 12

IK series New Milton American Type Quick Coupling ----- 14

AR series ARO210 Standard Quick Coupling ----- 16

LC series Lincoln Long Steam Type Quick Coupling ----- 18

UA series American Type A Universal Quick Coupling ----- 20

UB series American Type B Universal Quick Coupling ----- 22

UC series 2 in 1 American Type Quick Coupling ----- 24

2

European Type Quick Coupling

EU series European Type Quick Coupling ----- 26

EE series European Economical Type Quick Coupling ----- 29

EM series European Mini Type Quick Coupling ----- 31

GE series German Type Quick Coupling ----- 33

3

Japanese Type Quick Coupling

NT series Japanese Type Push-To-Connect Quick Coupling----- 35

NM series Japanese Type Manual-Operated Quick Coupling----- 38

4

British Type Quick Coupling

BR series British Type Pneumatic Quick Coupling----- 40

5

Israel Type Quick Coupling

IS series Israel Type Pneumatic Quick Coupling ----- 42

6

Other Quick Couplings And Accessories

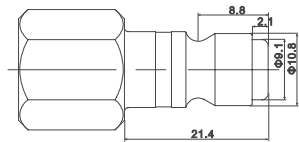
Other Quick Couplings And Accessories ----- 44

Profile of nipples or plugs

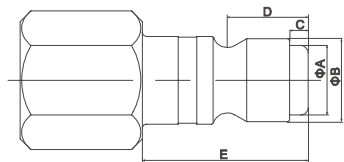
The profile dimension of the nipples or plugs is a standard for confirming whether the different series couplers can be interchanged. Only the same profile can be compatible with each other. There are many different profiles of different nipples. Tru-flate series, ARO series, Industrial interchange, Lincoln series, Nitto series, European series and British series are common nipples.

TR series

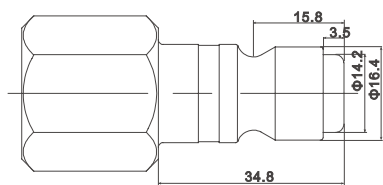
(Tru-Flate interchange)



1/4" Body Size



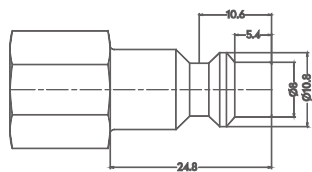
3/8" Body Size



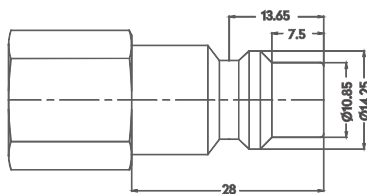
1/2" Body Size

IN series

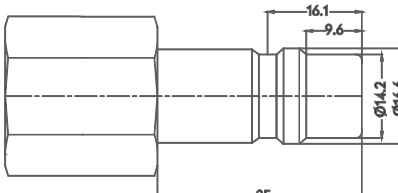
(Industrial interchange)



1/4" Body Size



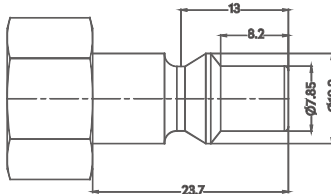
3/8" Body Size



1/2" Body Size

AR20 series

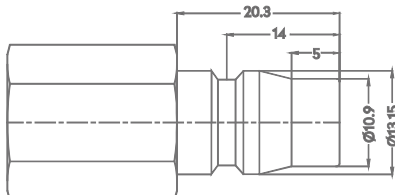
(ARO210 interchange)



1/4" Body Size

NT20 series

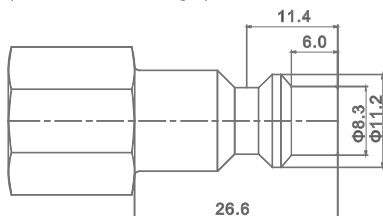
(NITTO interchange)



1/4" Body Size

IS20 series

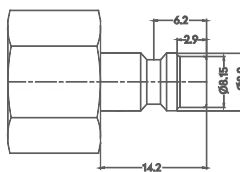
(Israel interchange)



1/4" Body Size

EM10 series

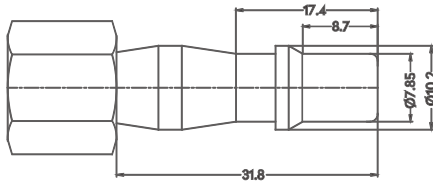
(Mini European interchange)



1/8" Body Size

BR20 series

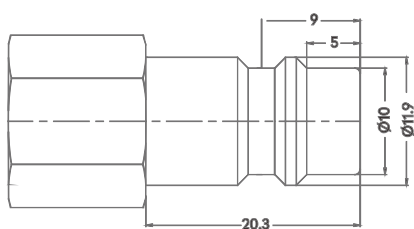
(British interchange)



1/4" Body Size

EU20 series

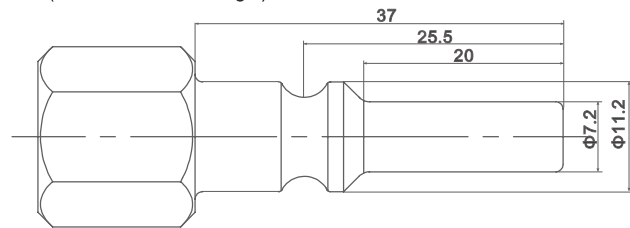
(European interchange)



1/4" Body Size

LC20 series

(Lincoln interchange)



1/4" Body Size

How to order

IN

IN

20

20

-

-

SF

SH

-

-

02

8

B

B

◆ Quick coupling type

IN:Industrial series
TR:Tru-Flate series
IH:High pressure Milont
IM:Milton series
IK:New Milton series
UA:Universal A series
UB:New universal B series
UC:Aluminum sleeve universal
AR:ARO210 series
LC:Lincoln series
EU:European series
EE:Economical European series
EM:Mini European series
GE:German series
NT: Nitto push-to-connect series
NM:Nitto manual-operated series
BR:British series
IS:Israel series

◆ Body size

20: 1/4"
30: 3/8"
40: 1/2"

◆ Coupling type

SF: Female socket
SM: Male socket
SH: Hose barb socket
SN: Nut-lock type
SHL: Hose barb lock type socket
PF: Female plug
PM: Male plug
PH: Hose barb plug
PN: Nut-lock type
PHL: Hose barb lock type plug

◆ Thread or Hose I.D.code

01: 1/8" 1/4: 1/4"
02: 1/4" 3/8: 3/8"
03: 3/8" 1/2: 1/2"
04: 1/2" 6:6mm, 8:8mm, 10:10mm

◆ Material code

B: Brass
S: Carbon steel
A: Aluminum alloy
SS: Stainless steel SUS304/303

TR Series Tru-flate Type Quick Coupling

Self sealing socket+Thru-type plug

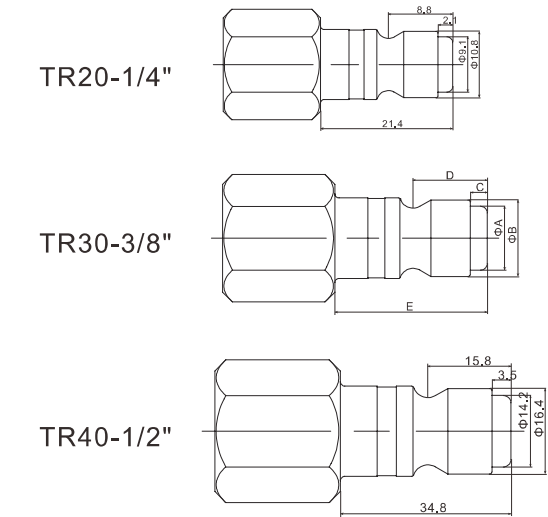


Ordering code

TR 20 - SF - 02 B

- Tru-Flate series
- Body size
 - 20: 1/4"
 - 30: 3/8"
 - 40: 1/2"
- Coupling type
 - SF: Female socket
 - SM: Male socket
 - SH: Hose barb socket
 - SHL: Hose barb lock type socket
 - PF: Female plug
 - PM: Male plug
 - PH: Hose barb plug
 - PHL: Hose barb lock type plug
- Thread code
 - 02: 1/4"NPT
 - 03: 3/8"NPT
 - 04: 1/2"NPT
- Material code
 - B: Brass
 - S: Carbon steel
 - SS: Stainless steel SUS304/303

Plug profile



Compatible with

FOKCA
PARKER

TR20, TR30, TR40
10

Features

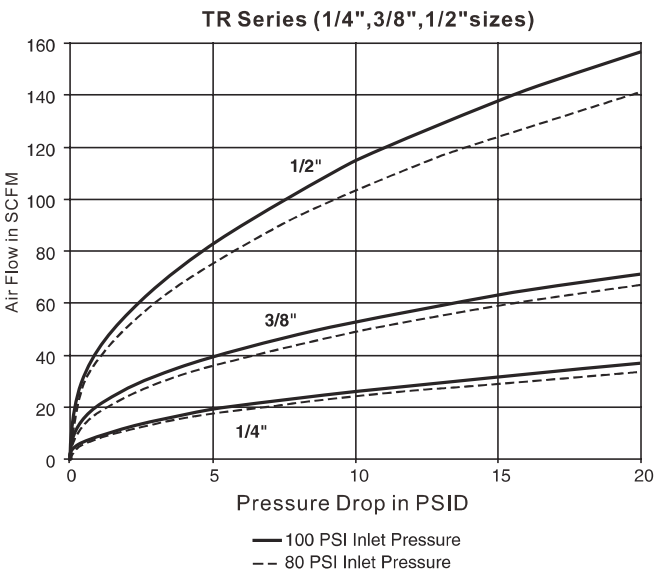
TR series pneumatic quick coupling conforms to the Tru-Flate design and can be used interchangeably with Parker's 10 series nipples. Normally, they are made of carbon steel, brass. Carbon steel materials can bear higher working pressures than brass. Brass and stainless steel materials can be used in water, oil mist and corrosive environments. If considering both of working pressure and medium, mixed materials can also be used, such as brass body, carbon steel sleeve, stainless steel spring and balls, in order to reach the performance required.

According to the flow rate and the size of orifice, TR series quick coupling are divided into three types: 1/4", 3/8", and 1/2", which can meet the different flow requirements. If used in special environments such as seawater or corrosive or high temperature, full stainless steel couplers and FKM sealing parts are available.

Specification

| Series | TR20 | TR30 | TR40 |
|---------------------|----------------|---------|---------|
| Body Size(in.) | 1/4" | 3/8" | 1/2" |
| Rated Pressure(MPa) | 2.0MPa | 2.0MPa | 2.0MPa |
| Temperature Range | - 10°C ~ +70°C | | |
| Locking Device | 4 balls | 6 balls | 8 balls |

Performance



TR Series Tru-flate Type Quick Coupling

Self sealing socket+Thru-type plug



Plugs/Nipples

| Female Pipe Thread | Model | Body Size | Thread -NPT | Overall (D) | Exposed (E) | Hex Size (F) | Diameter (G) |
|--------------------|------------|-----------|-------------|-------------|-------------|--------------|--------------|
| | TR20-PF-01 | 1/4 | 1/8-27 | 37.3 | 18.8 | 13 | 14.7 |
| | TR20-PF-02 | 1/4 | 1/4-18 | 41.1 | 22.6 | 14 | 16.5 |
| | TR20-PF-03 | 1/4 | 3/8-18 | 43.7 | 25.1 | 18 | 20.3 |
| | TR30-PF-03 | 3/8 | 1/4-18 | 47.8 | 24.1 | 16 | 18.3 |
| | TR30-PF-04 | 3/8 | 3/8-18 | 48.3 | 24.9 | 18 | 20.3 |
| | TR40-PF-03 | 1/2 | 3/8-18 | 59.2 | 28.4 | 18 | 20.1 |
| | TR40-PF-04 | 1/2 | 1/2-14 | 63.0 | 32.3 | 22 | 25.7 |
| | TR40-PF-06 | 1/2 | 3/4-14 | 64.3 | 32.8 | 29 | 33.0 |

| Male Pipe Thread | Model | Body Size | Thread -NPT | Overall (D) | Exposed (E) | Hex Size (F) | Diameter (G) |
|------------------|------------|-----------|-------------|-------------|-------------|--------------|--------------|
| | TR20-PM-01 | 1/4 | 1/8-27 | 37.3 | 18.8 | 13 | 14.7 |
| | TR20-PM-02 | 1/4 | 1/4-18 | 41.1 | 22.6 | 14 | 16.5 |
| | TR20-PM-03 | 1/4 | 3/8-18 | 43.7 | 25.1 | 18 | 20.3 |
| | TR30-PM-02 | 3/8 | 1/4-18 | 47.8 | 24.1 | 16 | 18.3 |
| | TR30-PM-03 | 3/8 | 3/8-18 | 48.3 | 24.9 | 18 | 20.3 |
| | TR40-PM-03 | 1/2 | 3/8-18 | 59.2 | 28.4 | 18 | 20.1 |
| | TR40-PM-04 | 1/2 | 1/2-14 | 63.0 | 32.3 | 22 | 25.7 |
| | TR40-PM-06 | 1/2 | 3/4-14 | 64.3 | 32.8 | 29 | 33.0 |

| Standard Hose Barb | Model | Body Size | Hose -I.D. | Overall (D) | Exposed (E) | Diameter (G) |
|--------------------|-------------|-----------|------------|-------------|-------------|--------------|
| | TR20-PH-1/4 | 1/4 | 1/4 | 41.1 | 22.9 | 11.4 |
| | TR20-PH-3/8 | 1/4 | 3/8 | 50.8 | 32.3 | 14.0 |
| | TR30-PH-3/8 | 3/8 | 3/8 | 46.0 | 22.6 | 15.0 |
| | TR40-PH-3/8 | 1/2 | 3/8 | 64.3 | 32.8 | 17.5 |
| | TR40-PH-1/2 | 1/2 | 1/2 | 71.4 | 40.6 | 20.6 |
| | TR40-PH-3/4 | 1/2 | 3/4 | 80.3 | 48.5 | 23.9 |

| Push-Lok Hose barb | Model | Body Size | Hose -I.D. | Overall (D) | Exposed (E) | Diameter (G) |
|--------------------|--------------|-----------|------------|-------------|-------------|--------------|
| | TR20-PHL-1/4 | 1/4 | 1/4 | 42.2 | 23.6 | 11.4 |
| | TR20-PHL-3/8 | 1/4 | 3/8 | 50.3 | 31.8 | 21.8 |
| | TR30-PHL-3/8 | 3/8 | 3/8 | 50.3 | 26.9 | 15.0 |
| | TR40-PHL-3/8 | 1/2 | 3/8 | 64.0 | 32.3 | 21.8 |
| | TR40-PHL-1/2 | 1/2 | 1/2 | 67.6 | 36.1 | 24.6 |

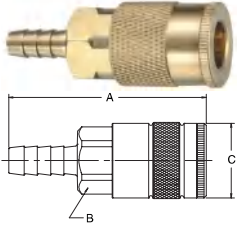
TR Series Tru-flate Type Quick Coupling

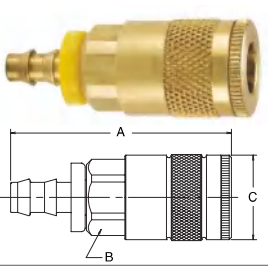
Self sealing socket+Thru-type plug

Sockets/Couplers

| Female Pipe Thread | Model | Body Size | Thread -NPT | Overall (A) | Hex Size (B) | Diameter (C) |
|---|------------|-----------|-------------|-------------|--------------|--------------|
|  | TR20-SF-01 | 1/4 | 1/8-27 | 46.5 | 19 | 22.9 |
| | TR20-SF-02 | 1/4 | 1/4-18 | 52.1 | 19 | 22.9 |
| | TR20-SF-03 | 1/4 | 3/8-18 | 52.8 | 19 | 22.9 |
| | TR30-SF-02 | 3/8 | 1/4-18 | 59.9 | 22 | 26.9 |
| | TR30-SF-03 | 3/8 | 3/8-18 | 60.7 | 22 | 26.9 |
| | TR30-SF-04 | 3/8 | 1/2-14 | 64.8 | 22 | 26.9 |
| | TR40-SF-03 | 1/2 | 3/8-18 | 64.8 | 25 | 30.2 |
| | TR40-SF-04 | 1/2 | 1/2-14 | 78.2 | 25 | 30.2 |
| | TR40-SF-06 | 1/2 | 3/4-14 | 81.5 | 29 | 33.0 |

| Male Pipe Thread | Model | Body Size | Thread -NPT | Overall (A) | Hex Size (B) | Diameter (C) |
|---|------------|-----------|-------------|-------------|--------------|--------------|
|  | TR20-SM-01 | 1/4 | 1/8-27 | 48.0 | 19 | 22.9 |
| | TR20-SM-02 | 1/4 | 1/4-18 | 52.1 | 19 | 22.9 |
| | TR20-SM-03 | 1/4 | 3/8-18 | 52.8 | 19 | 22.9 |
| | TR30-SM-02 | 3/8 | 1/4-18 | 59.9 | 22 | 26.9 |
| | TR30-SM-03 | 3/8 | 3/8-18 | 60.7 | 22 | 26.9 |
| | TR30-SM-04 | 3/8 | 1/2-14 | 64.8 | 22 | 26.9 |
| | TR40-SM-03 | 1/2 | 3/8-18 | 74.4 | 25 | 30.2 |
| | TR40-SM-04 | 1/2 | 1/2-14 | 78.2 | 25 | 30.2 |
| | TR40-SM-06 | 1/2 | 3/4-14 | 81.5 | 29 | 33.0 |

| Standard Hose Barb | Model | Body Size | Hose -I.D. | Overall (A) | Hex Size (B) | Diameter (C) |
|---|--------------|-----------|------------|-------------|--------------|--------------|
|  | TR20-SH-1/4 | 1/4 | 1/4 | 63.2 | 19 | 22.9 |
| | TR20-SH-5/16 | 1/4 | 5/16 | 63.2 | 19 | 22.9 |
| | TR20-SH-3/8 | 1/4 | 3/8 | 63.2 | 19 | 22.9 |
| | TR30-SH-3/8 | 3/8 | 3/8 | 72.6 | 22 | 26.9 |
| | TR30-SH-1/2 | 3/8 | 1/2 | 78.2 | 22 | 26.9 |
| | TR40-SH-3/8 | 1/2 | 3/8 | 85.6 | 25 | 30.2 |
| | TR40-SH-1/2 | 1/2 | 1/2 | 91.9 | 25 | 30.2 |
| | TR40-SH-3/4 | 1/2 | 3/4 | 100.6 | 25 | 30.2 |
| | | | | | | |
| | | | | | | |
| | | | | | | |
| | | | | | | |

| Push-Lok Hose barb | Model | Body Size | Hose -I.D. | Overall (A) | Hex Size (B) | Diameter (C) |
|---|--------------|-----------|------------|-------------|--------------|--------------|
|  | TR20-SHL-1/4 | 1/4 | 1/4 | 58.9 | 19 | 22.9 |
| | TR20-SHL-3/8 | 1/4 | 3/8 | 62.7 | 19 | 22.9 |
| | TR30-SHL-3/8 | 3/8 | 3/8 | 73.2 | 22 | 26.9 |
| | TR40-SHL-3/8 | 1/2 | 3/8 | 85.1 | 25 | 30.2 |
| | TR40-SHL-1/2 | 1/2 | 1/2 | 87.9 | 25 | 30.2 |

IN Series Industrial Type Quick Coupling

Self sealing socket+Thru-type plug



Compatible with

| | |
|-----------------|----------------|
| FOKCA | IN20,IN30,IN40 |
| INDUSTRIAL | 1/4",3/8",1/2" |
| PARKER | 20 |
| RECTUS | 23 |
| HANSEN | 3000 |
| CEJN | 310 |
| ATLAS COPCO QIC | 08 |

Features

IN series pneumatic quick couplings are compatible with Parker's 20 Industry series nipples. Normally, they are made of carbon steel, brass. Carbon steel materials can bear higher working pressures than brass. Brass and stainless steel materials can be used in water, oil mist and corrosive environments. If considering both of working pressure and medium, mixed materials can also be used, such as brass body, carbon steel sleeve, stainless steel spring and balls, in order to reach the performance required.

According to the flow rate and the size of orifice, IN series quick coupling are divided into three types: 1/4", 3/8", and 1/2", which can meet the different flow requirements. If used in special environments such as seawater or corrosive or high temperature, full stainless steel couplers and FKM sealing parts are available.

Ordering code

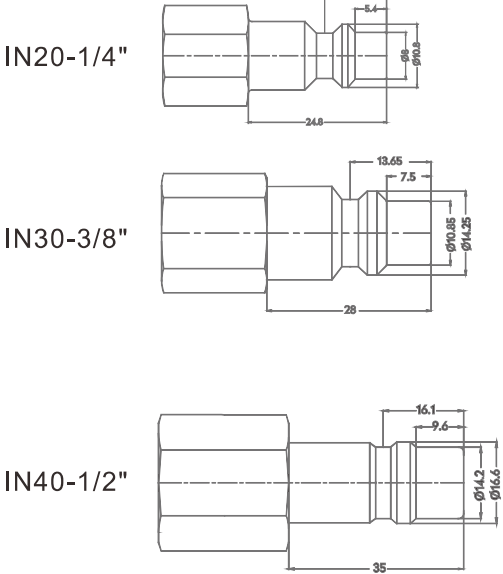
IN 20 - SF - 02 B

- ◆ Industrial series
- ◆ Body size
20: 1/4"
30: 3/8"
40: 1/2"
- ◆ Coupling type
SF: Female socket
SM: Male socket
SH: Hose barb socket
SHL: Hose barb lock type socket
PF: Female plug
PM: Male plug
PH: Hose barb plug
PHL: Hose barb lock type plug
- ◆ Thread code
02: 1/4"NPT
03: 3/8"NPT
04: 1/2"NPT
- ◆ Material code
B: Brass
S: Carbon steel
SS: Stainless steel SUS304/303

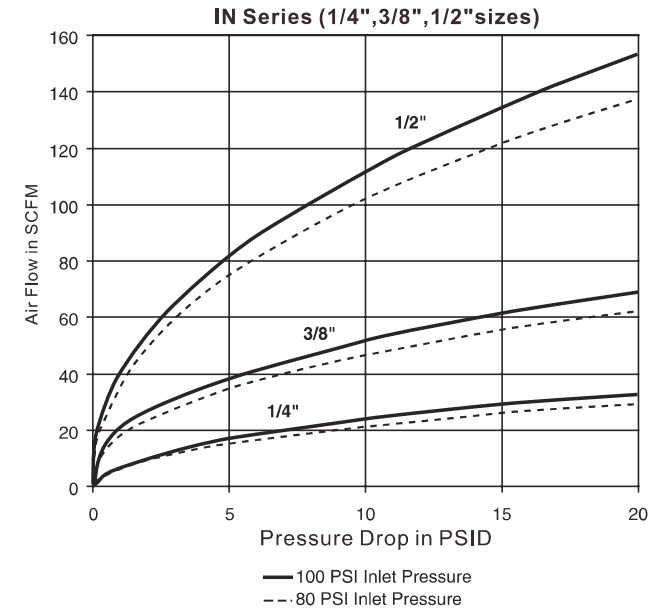
Specification

| Series | IN20 | IN30 | IN40 |
|---------------------|---------------|---------|---------|
| Body Size(in.) | 1/4" | 3/8" | 1/2" |
| Rated Pressure(MPa) | 2.0MPa | 2.0MPa | 2.0MPa |
| Temperature Range | -10°C ~ +70°C | | |
| Locking Device | 6 balls | 8 balls | 8 balls |

Plug profile



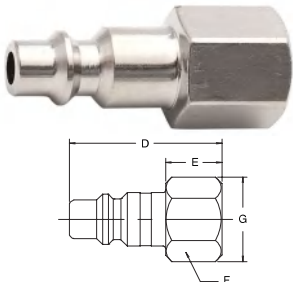
Performance

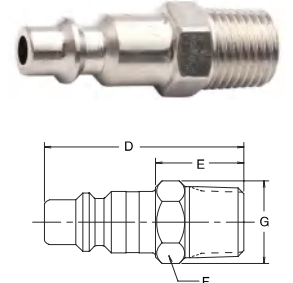


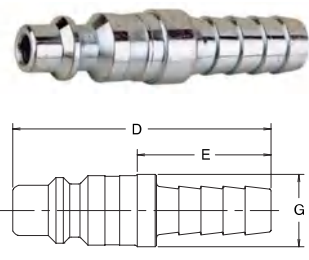
IN Series Industrial Type Quick Coupling

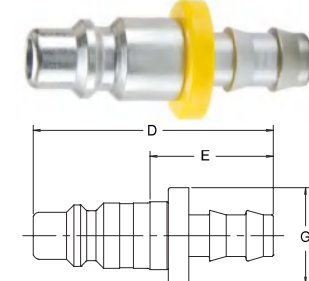
Self sealing socket+Thru-type plug

Plugs/Nipples

| Female Pipe Thread | Model | Body Size | Thread -NPT | Overall (D) | Exposed (E) | Hex Size (F) | Diameter (G) |
|---|------------|-----------|-------------|-------------|-------------|--------------|--------------|
|  | IN20-PF-01 | 1/4 | 1/8-27 | 35.1 | 15.5 | 13 | 14. 7 |
| | IN20-PF-02 | 1/4 | 1/4-18 | 39.6 | 20.3 | 16 | 18. 3 |
| | IN20-PF-03 | 1/4 | 3/8-18 | 40.6 | 21.1 | 21 | 23.9 |
| | IN30-PF-02 | 3/8 | 1/4-18 | 40.6 | 16.5 | 16 | 18. 3 |
| | IN30-PF-03 | 3/8 | 3/8-18 | 42.9 | 18.8 | 21 | 23. 9 |
| | IN30-PF-04 | 3/8 | 1/2-14 | 46.7 | 22.9 | 25 | 29. 5 |
| | IN40-PF-03 | 1/2 | 3/8-18 | 51.6 | 20.1 | 21 | 23. 9 |
| | IN40-PF-04 | 1/2 | 1/2-14 | 57.2 | 25.7 | 25 | 29. 5 |
| | IN40-PF-06 | 1/2 | 3/4-14 | 60.5 | 28.7 | 32 | 36. 6 |
| | IN40-PF-04 | 3/4 | 1/2-14 | 56.4 | 28.7 | 33 | 38.6 |
| | IN40-PF-06 | 3/4 | 3/4-14 | 56.4 | 26.9 | 33 | 38.6 |
| | IN40-PF-08 | 3/4 | 1-11 | 61.2 | 31.8 | 40 | 45.7 |

| Male Pipe Thread | Model | Body Size | Thread -NPT | Overall (D) | Exposed (E) | Hex Size (F) | Diameter (G) |
|--|------------|-----------|-------------|-------------|-------------|--------------|--------------|
|  | IN20-PM-01 | 1/4 | 1/8-27 | 39.6 | 20.3 | 13 | 14. 7 |
| | IN20-PM-02 | 1/4 | 1/4-18 | 42.2 | 22.6 | 14 | 16.5 |
| | IN20-PM-03 | 1/4 | 3/8-18 | 46 | 26.7 | 18 | 20.3 |
| | IN20-PM-01 | 3/8 | 1/8-27 | 43.7 | 19.6 | 16 | 18.3 |
| | IN30-PM-02 | 3/8 | 1/4-18 | 47.8 | 23.6 | 16 | 18. 3 |
| | IN30-PM-03 | 3/8 | 3/8-18 | 48.5 | 24.4 | 18 | 20.3 |
| | IN30-PM-04 | 3/8 | 1/2-14 | 53.8 | 30.0 | 22 | 25.9 |
| | IN40-PM-03 | 1/2 | 3/8-18 | 58.7 | 27.2 | 18 | 20.1 |
| | IN40-PM-04 | 1/2 | 1/2-14 | 63 | 31 | 22 | 25.7 |
| | IN40-PM-06 | 1/2 | 3/4-14 | 64.3 | 32.8 | 29 | 33 |
| | IN40-PM-04 | 3/4 | 1/2-14 | 58.9 | 29.5 | 25 | 29.5 |
| | IN40-PM-06 | 3/4 | 3/4-14 | 60.5 | 31.0 | 27 | 31 |
| | IN40-PM-08 | 3/4 | 1-11 | 65 | 35.6 | 33 | 38.6 |

| Standard Hose Barb | Model | Body Size | Hose I.D. | Overall (D) | Exposed (E) | Diameter (G) |
|---|--------------|-----------|-----------|-------------|-------------|--------------|
|  | IN20-PH-1/4 | 1/4 | 1/4 | 43.7 | 24.1 | 11. 7 |
| | IN20-PH-1/4 | 1/4 | 1/4 | 53.1 | 33.8 | 14.0 |
| | IN20-PH-5/16 | 1/4 | 5/16 | 53.1 | 33.8 | 14.0 |
| | IN30-PH-3/8 | 1/4 | 3/8 | 53.1 | 33.8 | 14.0 |
| | IN30-PH-3/8 | 3/8 | 3/8 | 47 | 22.9 | 15.0 |
| | IN30-PH-1/2 | 3/8 | 1/2 | 55.6 | 31.5 | 17.3 |
| | IN40-PH-3/8 | 1/2 | 3/8 | 64.3 | 32.8 | 17.3 |
| | IN40-PH-1/2 | 1/2 | 1/2 | 64.3 | 32.8 | 17.3 |
| | IN40-PH-3/8 | 1/2 | 3/8 | 77.7 | 46.2 | 23.6 |
| | IN40-PH-1/2 | 3/4 | 1/2 | 62.7 | 33.3 | 23.6 |
| | IN40-PH-3/4 | 3/4 | 3/4 | 76.2 | 46.7 | 23.6 |
| | IN40-PH-1 | 3/4 | 1 | 82.3 | 52.8 | 31.5 |

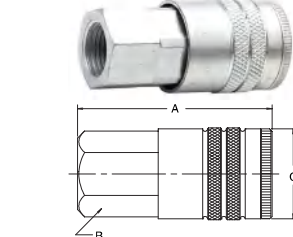
| Push-Lok Hose barb | Model | Body Size | Hose I.D. | Overall (D) | Exposed (E) | Diameter (G) |
|---|-------------|-----------|-----------|-------------|-------------|--------------|
|  | IN20-PH-1/4 | 1/4 | 1/4 | 44.2 | 24.6 | 11. 7 |
| | IN20-PH-3/8 | 1/4 | 3/8 | 52.8 | 33.3 | 21.8 |
| | IN30-PH-1/4 | 3/8 | 1/4 | 47.5 | 23.4 | 15.0 |
| | IN30-PH-3/8 | 3/8 | 3/8 | 51.3 | 27.2 | 15.0 |
| | IN30-PH-1/2 | 3/8 | 1/2 | 58.7 | 34.8 | 24.6 |
| | IN40-PH-3/8 | 1/2 | 3/8 | 64.0 | 32.3 | 21.8 |
| | IN40-PH-1/2 | 1/2 | 1/2 | 67.6 | 36.1 | 24.6 |
| | IN40-PH-5/8 | 1/2 | 5/8 | 74.9 | 43.4 | 29.0 |

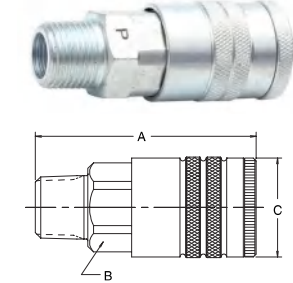
IN Series Industrial Type Quick Coupling

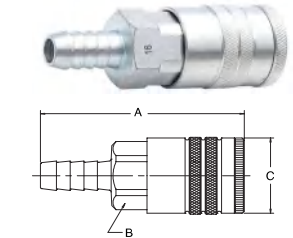
Self sealing socket+Thru-type plug

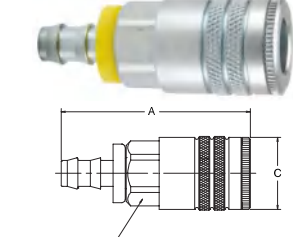


Sockets/Couplers

| Female Pipe Thread | Model | Body Size | Thread -NPT | Overall (A) | Hex Size (B) | Diameter (C) |
|---|------------|-----------|-------------|-------------|--------------|--------------|
|  | IN20-SF-01 | 1/4 | 1/8-27 | 46.5 | 19.1 | 22.9 |
| | IN20-SF-02 | 1/4 | 1/4-18 | 46.5 | 19.1 | 22.9 |
| | IN20-SF-03 | 1/4 | 3/8-18 | 49.5 | 20.6 | 23.9 |
| | IN30-SF-02 | 3/8 | 1/4-18 | 56.4 | 22.4 | 26.9 |
| | IN30-SF-03 | 3/8 | 3/8-18 | 57.9 | 22.4 | 26.9 |
| | IN30-SF-04 | 3/8 | 1/2-14 | 64.8 | 25.4 | 29.5 |
| | IN40-SF-03 | 1/2 | 3/8-18 | 69.6 | 25.4 | 30.2 |
| | IN40-SF-04 | 1/2 | 1/2-14 | 75.2 | 25.4 | 30.2 |
| | IN40-SF-06 | 1/2 | 3/4-14 | 81.0 | 31.8 | 36.6 |

| Male Pipe Thread | Model | Body Size | Thread -NPT | Overall (A) | Hex Size (B) | Diameter (C) |
|--|------------|-----------|-------------|-------------|--------------|--------------|
|  | IN20-SM-01 | 1/4 | 1/8-27 | 48.0 | 19.1 | 22.9 |
| | IN20-SM-02 | 1/4 | 1/4-18 | 52.1 | 19.1 | 22.9 |
| | IN20-SM-03 | 1/4 | 3/8-18 | 52.8 | 19.1 | 22.9 |
| | IN30-SM-02 | 3/8 | 1/4-18 | 59.9 | 22.4 | 26.9 |
| | IN30-SM-03 | 3/8 | 3/8-18 | 60.7 | 22.4 | 26.9 |
| | IN30-SM-04 | 3/8 | 1/2-14 | 64.8 | 22.4 | 26.9 |
| | IN40-SM-03 | 1/2 | 3/8-18 | 74.4 | 25.4 | 30.2 |
| | IN40-SM-04 | 1/2 | 1/2-14 | 78.2 | 25.4 | 30.2 |
| | IN40-SM-06 | 1/2 | 3/4-14 | 81.5 | 28.7 | 33.0 |

| Standard Hose Barb | Model | Body Size | Hose I.D. | Overall (A) | Hex Size (B) | Diameter (C) |
|---|--------------|-----------|-----------|-------------|--------------|--------------|
|  | IN20-SH-1/4 | 1/4 | 1/4 | 63.2 | 19.1 | 22.9 |
| | IN20-SH-5/16 | 1/4 | 5/16 | 63.2 | 19.1 | 22.9 |
| | IN20-SH-3/8 | 1/4 | 3/8 | 63.2 | 19.1 | 22.9 |
| | IN30-SH-3/8 | 3/8 | 3/8 | 72.6 | 22.4 | 26.9 |
| | IN30-SH-1/2 | 3/8 | 1/2 | 78.2 | 22.4 | 26.9 |
| | IN40-SH-3/8 | 1/2 | 3/8 | 85.6 | 25.4 | 30.2 |
| | IN40-SH-1/2 | 1/2 | 1/2 | 91.9 | 25.4 | 30.2 |
| | IN40-SH-3/4 | 1/2 | 3/4 | 100.6 | 25.4 | 30.2 |

| Push-Lok Hose barb | Model | Body Size | Hose I.D. | Overall (A) | Hex Size (B) | Diameter (C) |
|---|--------------|-----------|-----------|-------------|--------------|--------------|
|  | IN20-SHL-1/4 | 1/4 | 1/4 | 58.9 | 19.1 | 22.9 |
| | IN20-SHL-3/8 | 1/4 | 3/8 | 62.7 | 19.1 | 22.9 |
| | IN30-SHL-3/8 | 3/8 | 3/8 | 73.2 | 22.4 | 26.9 |
| | IN40-SHL-3/8 | 1/2 | 3/8 | 85.1 | 25.4 | 30.2 |
| | IN40-SHL-1/2 | 1/2 | 1/2 | 87.9 | 25.4 | 30.2 |

IH Series High Pressure Type Quick Coupling

Self sealing socket+Thru-type plug



Features

IH series pneumatic quick coupling are compatible with Parker's 20 Industry series nipple or plug. Usually, the body is made of brass material, and the sleeve and the nipple or plug is made of carbon steel with zinc or nickel plated. There are 6 steel balls inside, which can bear higher working pressure. If it is replaced with FKM(Viton), it can work under high temperature and high pressure conditions.

For uses in special environments such as seawater or corrosive or high temperature, you are recommended to choose full stainless steel for both body, sleeve and plug, and FKM sealing. At present, only 1/4" flow body is available for this series. If you need a larger flow rate, it is recommended to choose IN30, IN40 series.

Ordering code

IH20-SF-02B

IH

20

SF

02

B

◆IH American series

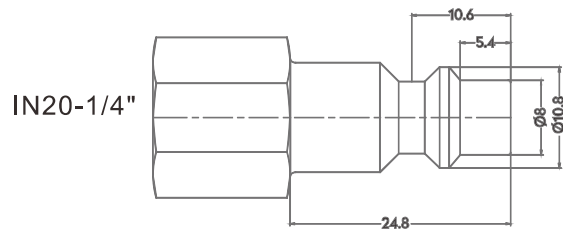
◆Body size
20: 1/4"

◆Coupling type
SF: Female socket
SM: Male socket
SH: Hose barb socket

◆Thread code
02: 1/4"NPT
03: 3/8"NPT
04: 1/2"NPT

◆Material code
B: Brass
S: Carbon steel
SS: Stainless steel SUS304/303

Plug profile



Compatible with

| | |
|-----------------|------|
| FOKCA | IN20 |
| INDUSTRIAL | 1/4" |
| PARKER | 20 |
| RECTUS | 23 |
| HANSEN | 3000 |
| CEJN | 310 |
| ATLAS COPCO QIC | 08 |

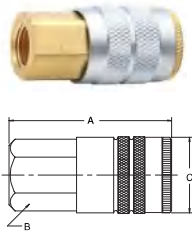
IH Series High Pressure Type Quick Coupling

Self sealing socket+Thru-type plug



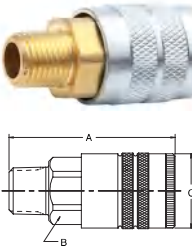
Sockets/Couplers

Female Pipe Thread



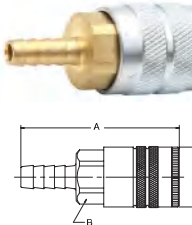
| Model | Body Size | Thread -T | Overall (A) | Hex Size (B) | Diameter (C) |
|------------|-----------|-----------|-------------|--------------|--------------|
| IH20-SF-02 | 1/4 | 1/4"NPT | 50 | 19 | 24.2 |

Male Pipe Thread



| Model | Body Size | Thread -T | Overall (A) | Hex Size (B) | Diameter (C) |
|------------|-----------|-----------|-------------|--------------|--------------|
| IH20-SF-02 | 1/4 | 1/4"NPT | 51.2 | 19 | 24.2 |

Standard Hose Barb

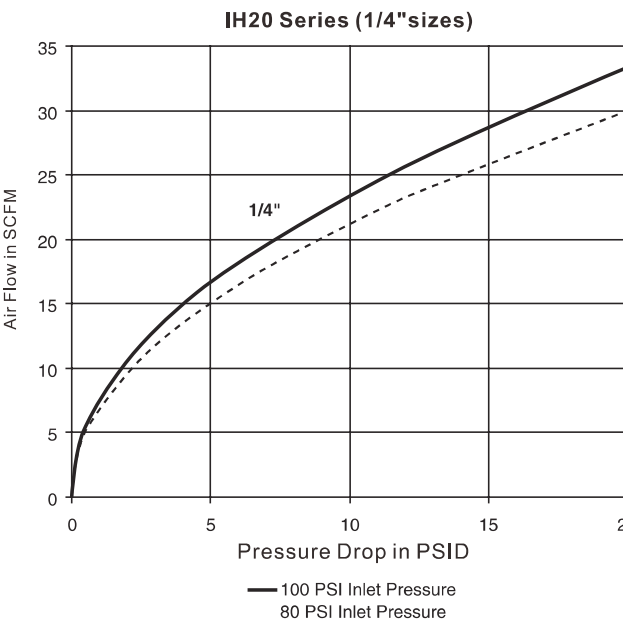


| Model | Body Size | Thread -T | Overall (A) | Hex Size (B) | Diameter (C) |
|-------------|-----------|-----------|-------------|--------------|--------------|
| IH20-SH-1/4 | 1/4 | 1/4" | 58.6 | 19 | 24.2 |

Specification

| Series | IH20 |
|-----------------------|---------------|
| Body Size(in.) | 1/4" |
| Maximum Pressure(MPa) | 2.0MPa |
| Temperature Range | -10°C ~ +70°C |
| Locking Device | 6 balls |

Performance



IM Series Milton American Type Quick Coupling

Self sealing socket+Thru-type plug



Features

IM20 series pneumatic quick couplings belong to Milton series and are compatible with Parker's 20 Industry series nipples or plugs. It is an economical type of American quick coupling. Usually nickel-plated carbon steel or brass pickling is used. There are 3 steel balls inside, and the sleeve is locked by a circlip. It is with small size, light in weight and excellent economical performance.

The maximum working pressure of IM20 series designed is 1.0MPa. If replace the sealing with FKM, it can also work under high temperature conditions. Our regular IM20 series couplings are designed with a 1/4" flow rate body size. If a larger flow rate is required, you are recommended to choose IN30, IN40 series.

Ordering code

IM 20 - SF - 02 B

◆ IM Milton series

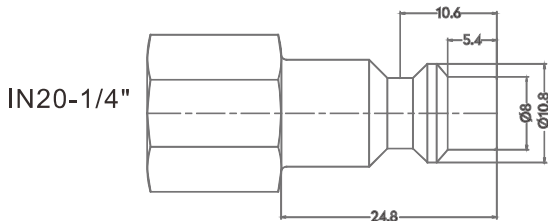
◆ Body size
20: 1/4"

◆ Coupling type
SF: Female socket
SM: Male socket
SH: Hose barb socket
SN: Nut lock socket
PF: Female plug
PM: Male plug
PH: Hose barb plug
PN: Nut lock plug

◆ Thread code
02: 1/4"NPT
03: 3/8"NPT
04: 1/2"NPT

◆ Material code
B: Brass
S: Carbon steel
SS: Stainless steel SUS304/303

Plug profile



Compatible with

| | |
|-----------------|------|
| FOKCA | IN20 |
| INDUSTRIAL | 1/4" |
| PARKER | 20 |
| RECTUS | 23 |
| HANSEN | 3000 |
| CEJN | 310 |
| ATLAS COPCO QIC | 08 |

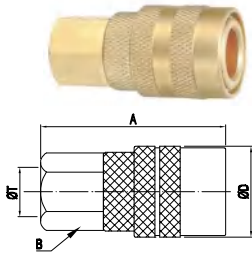
IM Series Milton American Type Quick Coupling

Self sealing socket+Thru-type plug



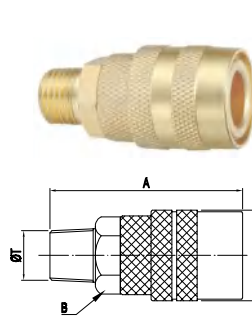
Sockets/Couplers

Female Pipe Thread



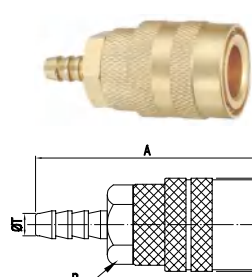
| Model | Body Size | Thread -NPT | Overall (A) | Hex Size (B) | Diameter (D) |
|------------|-----------|-------------|-------------|--------------|--------------|
| IM20-SF-02 | 1/4 | 1/4-18 | 44.5 | 17 | 23 |

Male Pipe Thread



| Model | Body Size | Thread -NPT | Overall (A) | Hex Size (B) | Diameter (D) |
|------------|-----------|-------------|-------------|--------------|--------------|
| IM20-SM-02 | 1/4 | 1/4-18 | 50 | 17 | 23 |

Standard Hose Barb

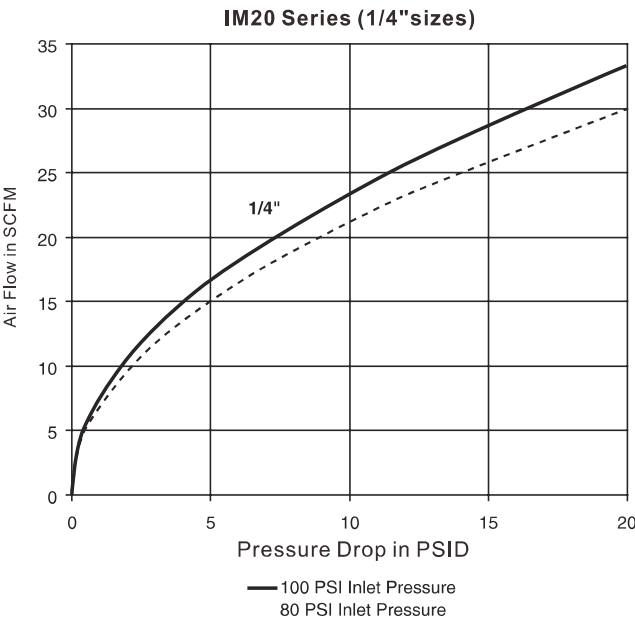


| Model | Body Size | Hose I.D. | Overall (A) | Exposed (B) | Diameter (D) |
|-------------|-----------|-----------|-------------|-------------|--------------|
| IM20-SH-1/4 | 1/4 | 1/4 | 56.5 | 17 | 23 |

Specification

| Series | IM20 |
|---------------------|---------------|
| Body Size(in.) | 1/4" |
| Rated Pressure(MPa) | 1.0MPa |
| Temperature Range | -10°C ~ +70°C |
| Locking Device | 3 balls |

Performance



IK Series New Milton American Type Quick Coupling

Self sealing socket+Thru-type plug

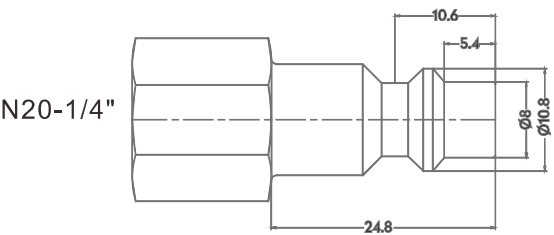


Ordering code

IK20-SF-02B

- IK New Milton series
- Body size
20: 1/4"
- Coupling type
SF: Female socket
SM: Male socket
SH: Hose barb socket
SN: Nut lock socket
PF: Female plug
PM: Male plug
PH: Hose barb plug
PN: Nut lock plug
- Thread code
02: 1/4"NPT
03: 3/8"NPT
04: 1/2"NPT
- Material code
B: Brass
S: Carbon steel
SS: Stainless steel SUS304/303

Plug profile



Compatible with

| | |
|-----------------|------|
| FOKCA | IN20 |
| INDUSTRIAL | 1/4" |
| PARKER | 20 |
| RECTUS | 23 |
| HANSEN | 3000 |
| CEJN | 310 |
| ATLAS COPCO QIC | 08 |

Features

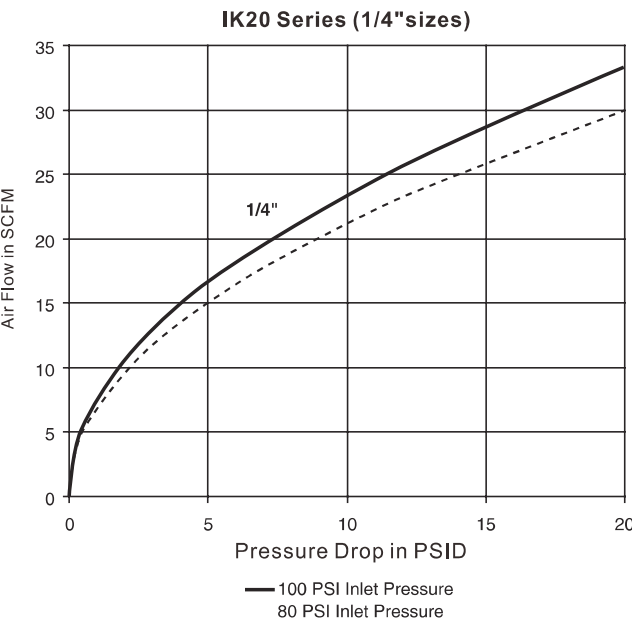
IK20 series pneumatic quick couplings are a variant of the IN20 series and are compatible with Parker's 20 Industry series nipples or plugs. It is usually made of carbon steel with nickel-plated on the surface or brass with acid pickling, and the internal element is made of brass as well. This series of quick couplings are designed with 4 steel balls, and its maximum working pressure is between IH20 and IM20 series.

If replace its sealing with FKM, it can also work under high temperature conditions. The regular IK20 is designed with a 1/4" flow rate body. If needs a larger flow rate, you are recommended to choose IN30, IN40 series.

Specification

| Series | IK20 |
|---------------------|---------------|
| Body Size(in.) | 1/4" |
| Rated Pressure(MPa) | 2.0MPa |
| Temperature Range | -10°C ~ +70°C |
| Locking Device | 4 balls |

Performance



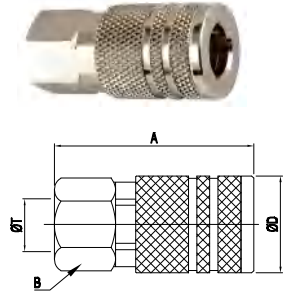
IK Series New Milton American Type Quick Coupling

Self sealing socket+Thru-type plug



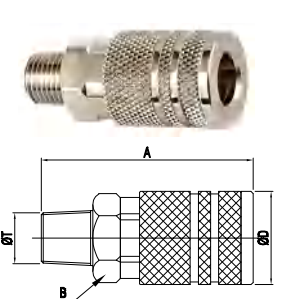
Sockets/Couplers

Female Pipe Thread



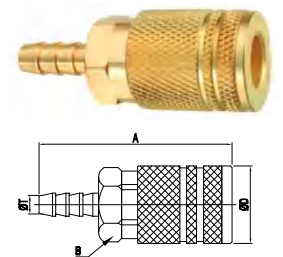
| Model | Body Size | Thread -NPT | Overall (A) | Hex Size (B) | Diameter (D) |
|------------|-----------|-------------|-------------|--------------|--------------|
| IK20-SF-02 | 1/4 | 1/4-18 | 48 | 19 | 22.8 |

Male Pipe Thread



| Model | Body Size | Thread -NPT | Overall (A) | Hex Size (B) | Diameter (D) |
|------------|-----------|-------------|-------------|--------------|--------------|
| IK20-SF-02 | 1/4 | 1/4-18 | 54 | 19 | 22.8 |

Standard Hose Barb



| Model | Body Size | Hose I.D. | Overall (A) | Exposed (B) | Diameter (D) |
|-------------|-----------|-----------|-------------|-------------|--------------|
| IK20-SH-1/4 | 1/4 | 1/4 | 63 | 19 | 22.8 |

AR Series Aro210 Standard Quick Coupling

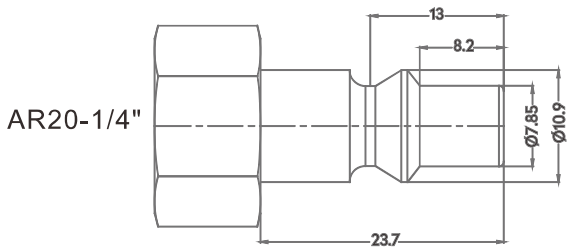
Self sealing socket+Thru-type plug



Ordering code

- AR 20 - SF - 02 B
- ◆ ARO210 series
 - ◆ Body size
20: 1/4"
 - ◆ Coupling type
SF: Female socket
SM: Male socket
SH: Hose barb socket
SHL: Hose barb lock type socket
SN: Nut lock socket
PF: Female plug
PM: Male plug
PH: Hose barb plug
PHL: Hose barb lock type plug
PN: Nut lock plug
 - ◆ Thread code
02: 1/4"NPT
03: 3/8"NPT
04: 1/2"NPT
 - ◆ Material code
B: Brass
S: Carbon steel
SS: Stainless steel SUS304/303

Plug profile



Compatible with

| | |
|--------|-------|
| FOKCA | AR20 |
| PARKER | 50 |
| ARO | 210 |
| ORION | 44510 |
| RECTUS | 14,22 |
| FOSTER | 210 |
| CEJN | 300 |
| AMFLO | C38 |

Features

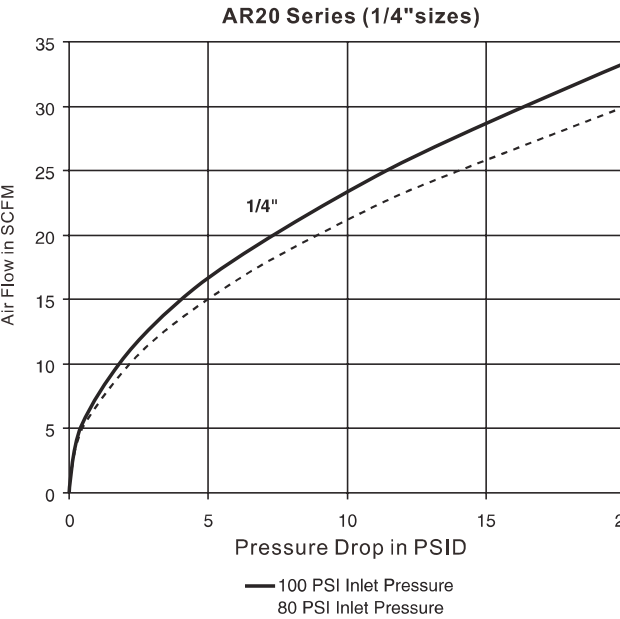
AR20 series, Parker 50 series, ARO210 and Orion 44510 series are interchangeable from one another. The outer profile of the nipples of them are completely same, and they can be compatible with each other. It is usually made of carbon steel with zinc plated or brass acid pickling on the surface. The internal element structured of brass, it is designed with 4 steel balls, and the maximum working pressure is 2.0MPa.

If you replace it with FKM fluorine rubber, it can also work under high temperature conditions. Our regular AR20 series is designed with a 1/4" flow rate body size only. If a larger flow rate is required, it is recommended to choose IN30, IN40 series.

Specification

| Series | AR20 |
|---------------------|---------------|
| Body Size(in.) | 1/4" |
| Rated Pressure(MPa) | 2.0MPa |
| Temperature Range | -10°C ~ +70°C |
| Locking Device | 4 balls |

Performance



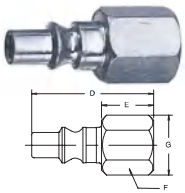
AR Series Aro210 Standard Quick Coupling

Self sealing socket+Thru-type plug



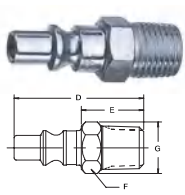
Plugs/Nipples

Female Pipe Thread



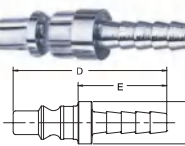
| Model | Body Size | Thread -NPT | Overall (D) | Exposed (E) | Hex.Size (F) | Diameter (G) |
|------------|-----------|-------------|-------------|-------------|--------------|--------------|
| AR20-PF-02 | 1/4 | 1/4-18 | 37.3 | 16.8 | 15.7 | 18.3 |

Male Pipe Thread



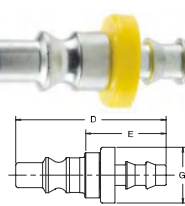
| Model | Body Size | Thread -NPT | Overall (D) | Exposed (E) | Hex.Size (F) | Diameter (G) |
|------------|-----------|-------------|-------------|-------------|--------------|--------------|
| AR20-PM-02 | 1/4 | 1/4-18 | 41.1 | 20.8 | 14.2 | 16.5 |

Standard Hose Barb



| Model | Body Size | Hose I.D. | Overall (D) | Exposed (E) | Diameter (G) |
|-------------|-----------|-----------|-------------|-------------|--------------|
| AR20-PH-1/4 | 1/4 | 1/4 | 41.4 | 21.6 | 10.9 |

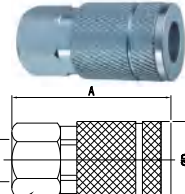
Push-Lok Hose barb



| Model | Body Size | Hose I.D. | Overall (D) | Exposed (E) | Diameter (G) |
|--------------|-----------|-----------|-------------|-------------|--------------|
| AR20-PHL-1/4 | 1/4 | 1/4 | 41.9 | 22.1 | 10.9 |

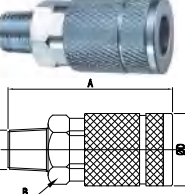
Sockets/Couplers

Female Pipe Thread



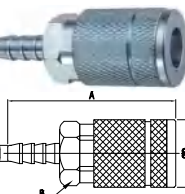
| Model | Body Size | Thread -NPT | Overall (A) | Hex.Size (B) | Diameter (D) |
|------------|-----------|-------------|-------------|--------------|--------------|
| AR20-SF-02 | 1/4 | 1/4-18 | 46.5 | 19 | 22.9 |
| AR20-SF-03 | 1/4 | 3/8-18 | 49.5 | 21 | 23.9 |

Male Pipe Thread



| Model | Body Size | Thread -NPT | Overall (A) | Hex.Size (B) | Diameter (D) |
|------------|-----------|-------------|-------------|--------------|--------------|
| AR20-SM-02 | 1/4 | 1/4-18 | 52.1 | 19.1 | 22.9 |
| AR20-SM-03 | 1/4 | 3/8-18 | 52.8 | 19.1 | 22.9 |

Standard Hose Barb



| Model | Body Size | Hose I.D. | Overall (A) | Exposed (B) | Diameter (D) |
|-------------|-----------|-----------|-------------|-------------|--------------|
| AR20-SH-1/4 | 1/4 | 1/4 | 58.9 | 19.1 | 22.9 |
| AR20-SH-3/8 | 1/4 | 3/8 | 62.7 | 19.1 | 22.9 |

LC Series Lincoln Long Stem Type Quick Coupling

Self sealing socket+Thru-type plug



Ordering code

LC20-SF-02B

◆ LC Lincoln series

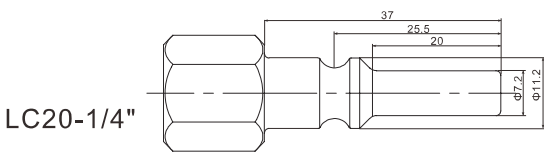
◆ Body size
20: 1/4"

◆ Coupling type
SF: Female socket
SM: Male socket
SH: Hose barb socket
SN: Nut lock socket
PF: Female plug
PM: Male plug
PH: Hose barb plug
PN: Nut lock plug

◆ Thread code
02: 1/4"NPT
03: 3/8"NPT
04: 1/2"NPT

◆ Material code
B: Brass
S: Carbon steel
SS: Stainless steel SUS304/303

Plug profile



Compatible with

FOKCA
PARKER
ARO
RECTUS
FOSTER
CEJN
AMFLO

LC20
70

Features

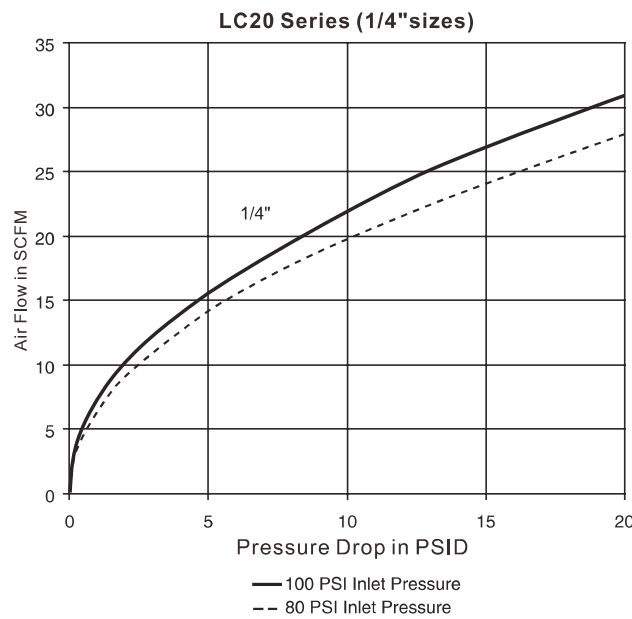
LC20 series pneumatic couplers are interchangeable with Lincoln's "Long Stem" series couplings, conforms to Parker 70 series. The outer profile of the nipples or plugs of them are completely same, and they can be compatible with each other. It is usually made of carbon steel with zinc plated, or brass with acid pickling. It is designed with 4 steel balls inside. The maximum working pressure is 2.0MPa. If the sealing is replaced with FKM fluorine rubber, it can also work under high temperature conditions.

The extra-long nipples ensures that it is not easy to shake and detach when connected with the female couplers. It is safe and reliable. At present, the regular LC20 series is designed with 1/4" flow rate body size only. If a larger flow joint is required, it is recommended to choose IN30, IN40 series.

Specification

| Series | LC20 |
|---------------------|-------------|
| Body Size(in.) | 1/4" |
| Rated Pressure(MPa) | 2.0MPa |
| Temperature Range | -10℃ ~ +70℃ |
| Locking Device | 4 balls |

Performance



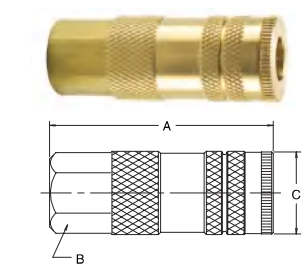
LC Series Lincoln Long Stem Type Quick Coupling

Self sealing socket+Thru-type plug



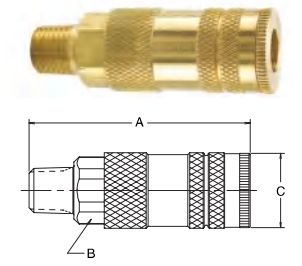
Sockets/Couplers

Female Pipe Thread



| Model | Body Size | Thread -NPT | Overall (A) | Hex Size (B) | Diameter (C) |
|------------|-----------|-------------|-------------|--------------|--------------|
| LC20-SF-02 | 1/4 | 1/4-18 | 61.0 | 19 | 22.9 |

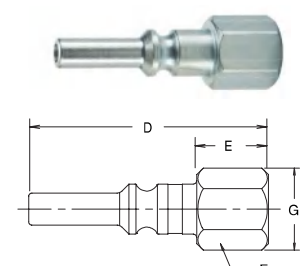
Male Pipe Thread



| Model | Body Size | Thread -NPT | Overall (A) | Hex Size (B) | Diameter (C) |
|------------|-----------|-------------|-------------|--------------|--------------|
| LC20-SM-02 | 1/4 | 1/4-18 | 66.5 | 19 | 22.9 |

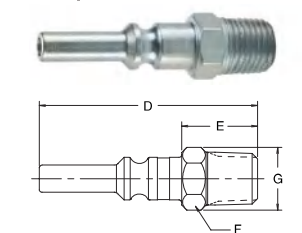
Plugs/Nipples

Female Pipe Thread



| Model | Body Size | Thread -NPT | Overall (D) | Exposed (E) | Hex Size (F) | Diameter (G) |
|------------|-----------|-------------|-------------|-------------|--------------|--------------|
| LC20-PF-02 | 1/4 | 1/4-18 | 53.3 | 19.6 | 16 | 18.3 |

Male Pipe Thread



| Model | Body Size | Thread -NPT | Overall (D) | Exposed (E) | Hex Size (F) | Diameter (G) |
|------------|-----------|-------------|-------------|-------------|--------------|--------------|
| LC20-PM-02 | 1/4 | 1/4-18 | 57.2 | 23.4 | 14 | 16.5 |

UA Series American Type A Universal Quick Coupling

Self sealing socket+Thru-type plug



Compatible with

| | |
|------------|----------------|
| FOKCA | IN20,TR20,AR20 |
| INDUSTRIAL | 1/4" |
| PARKER | 10,20,50 |
| RECTUS | 14,22,23 |
| ARO | 210 |
| ORION | 44510 |
| HANSEN | 3000 |

Features

UA20 series quick coupling conforms to ISO6150-B standard and can be interchanged with ARO210, industrial interchange 1/4" and Tru-Flate nipples. One female coupler can be matched with IN20, TR20 and AR20 plugs freely. It is usually made of carbon steel with nickel plated or brass with acid pickling.

The maximum working pressure is 2.0MPa. If it is replaced with fluorine rubber FKM, it can also work under high temperature conditions. UA20 series quick couplings are designed with 4 locking balls, and the push-to-connect sleeve structure makes the operation more convenient, tight, safe and reliable. The UA20 is only available in 1/4" flow rate body. If you need a larger flow rate, it is recommended to choose EU20 series.

Specification

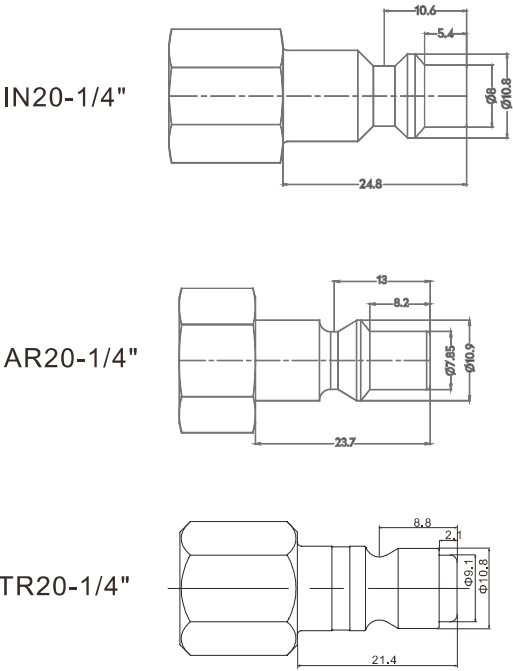
| Series | UA20 |
|---------------------|---------------|
| Body Size(in.) | 1/4" |
| Rated Pressure(MPa) | 2.0MPa |
| Temperature | -10°C ~ +70°C |
| Locking Device | 4 balls |

Ordering code

UA 20 - SF - 02 B

- ◆ Universal A series
- ◆ Body size
20: 1/4"
- ◆ Coupling type
SF: Female socket
SM: Male socket
SH: Hose barb socket
SN: Nut lock socket
PF: Female plug
PM: Male plug
PH: Hose barb plug
PN: Nut lock plug
- ◆ Thread code
02: 1/4"NPT
03: 3/8"NPT
04: 1/2"NPT
- ◆ Material code
B: Brass
S: Carbon steel
SS: Stainless steel SUS304/303

Plug profile



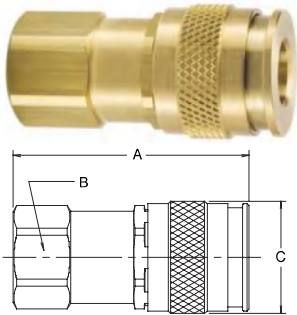
UA Series American Type A Universal Quick Coupling

Self sealing socket+Thru-type plug



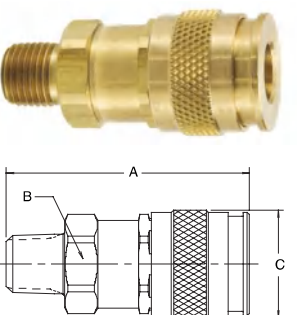
Sockets/Couplers

Female Pipe Thread



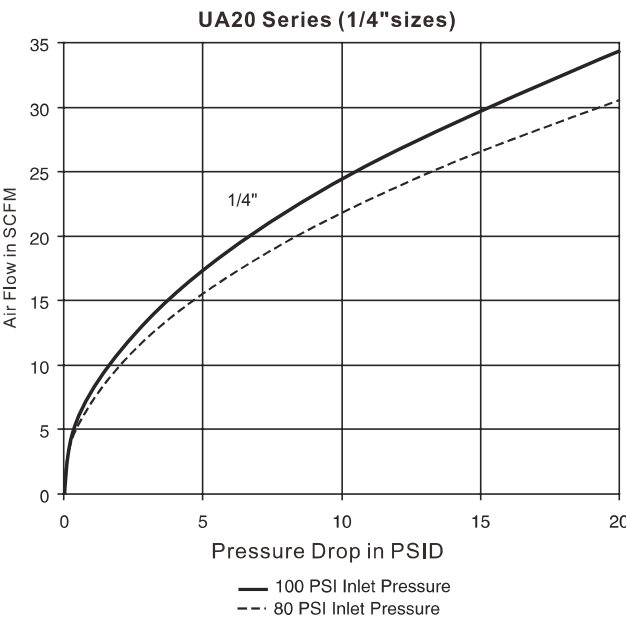
| Model | Body Size | Thread -NPT | Overall (A) | Hex Size (B) | Diameter (C) |
|------------|-----------|-------------|-------------|--------------|--------------|
| UA20-SF-02 | 1/4 | 1/4-18 | 50.8 | 21 | 25 |

Male Pipe Thread



| Model | Body Size | Thread -NPT | Overall (A) | Hex Size (B) | Diameter (C) |
|------------|-----------|-------------|-------------|--------------|--------------|
| UA20-SM-02 | 1/4 | 1/4-18 | 50.8 | 21 | 25 |

Performance



UB Series American Type B Universal Quick Coupling

Self sealing socket+Thru-type plug



Compatible with

| | |
|-----------------|----------------|
| FOKCA | IN20,TR20,AR20 |
| INDUSTRIAL | 1/4" |
| PARKER | 10,20,50 |
| RECTUS | 14,22,23 |
| ARO | 210 |
| ORION | 44510 |
| HANSEN | 3000 |
| CEJN | 300,310 |
| ATLAS COPCO QIC | 08 |

Features

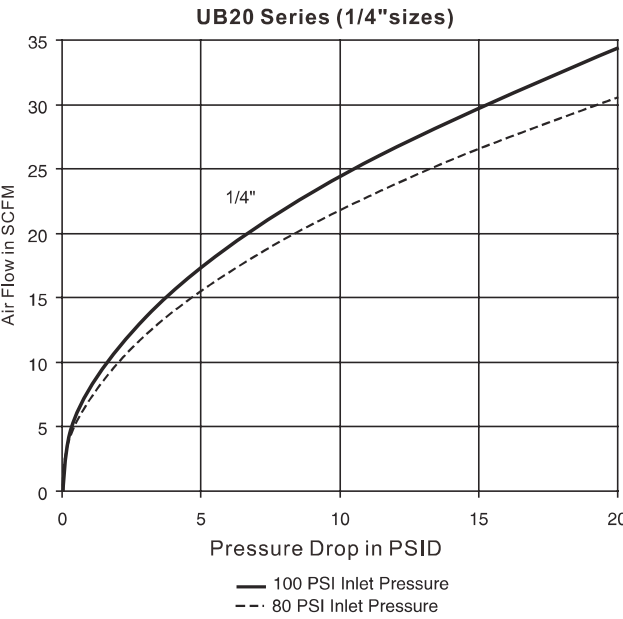
UB20 series pneumatic quick couplings are a variant of the UA20 series and conforms to ISO6150-B standard and can be compatible with ARO210, industrial interchange 1/4" and Tru-Flate nipples. One female coupler can be interchanged with IN20, TR20 and AR20 plugs freely. It is usually made of carbon steel with nickel plated or brass with acid pickling.

The maximum working pressure is 2.0MPa. If it is replaced with fluorine rubber FKM, it can also work under high temperature conditions. Compared with the UA20 series, the UB20 series has smaller size, lighter weight, lower cost, and simple operation, safe and reliable, but its flow rate is less than that of the UA series. The push-to-connect structure is easy for one hand operation. UA20 series is available for 1/4" flow rate body only. If you need a larger flow rate, it is recommended to choose EU20, or IN30, IN40 series.

Specification

| Series | UB20 |
|---------------------|---------------|
| Body Size(in.) | 1/4" |
| Rated Pressure(MPa) | 2.0MPa |
| Temperature Range | -10°C ~ +70°C |
| Locking Device | 6 balls |

Performance

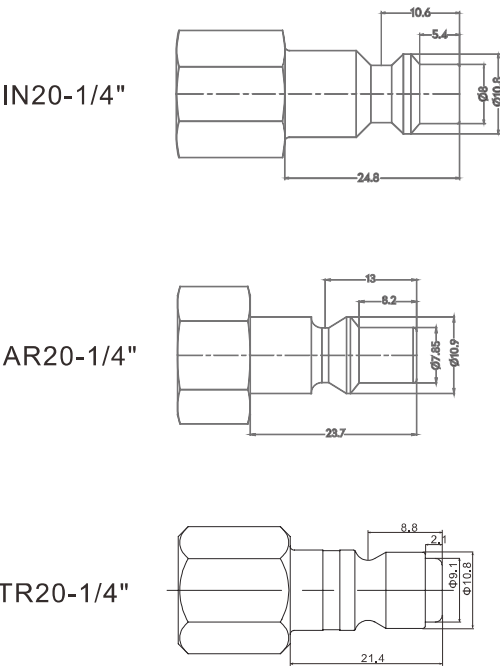


Ordering code

UB 20 - SF - 02 B

- ◆ Universal B series
- ◆ Body size
20: 1/4"
- ◆ Coupling type
SF: Female socket
SM: Male socket
SH: Hose barb socket
SN: Nut lock socket
PF: Female plug
PM: Male plug
PH: Hose barb plug
PN: Nut lock plug
- ◆ Thread code
02: 1/4"NPT
03: 3/8"NPT
04: 1/2"NPT
- ◆ Material code
B: Brass
S: Carbon steel
SS: Stainless steel SUS304/303

Plug profile



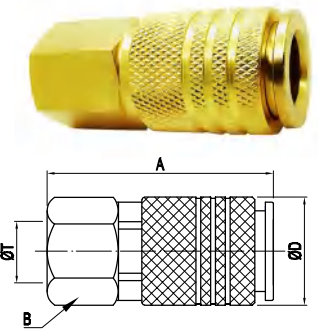
UB Series American Type B Universal Quick Coupling

Self sealing socket+Thru-type plug



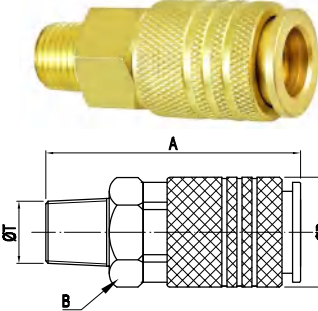
Sockets/Couplers

Female Pipe Thread



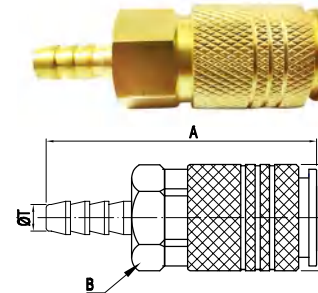
| Model | Body Size | Thread -T | Overall (A) | Hex Size (B) | Diameter (D) |
|------------|-----------|-----------|-------------|--------------|--------------|
| UB20-SF-02 | 1/4 | 1/4"NPT | 52 | 19 | 22 |

Male Pipe Thread



| Model | Body Size | Thread -T | Overall (A) | Hex Size (B) | Diameter (D) |
|------------|-----------|-----------|-------------|--------------|--------------|
| UB20-SM-02 | 1/4 | 1/4"NPT | 52 | 19 | 22 |

Standard Hose Barb



| Model | Body Size | Hose I.D. | Overall (A) | Hex Size (B) | Diameter (D) |
|------------|-----------|-----------|-------------|--------------|--------------|
| UB20-SH-02 | 1/4 | 1/4" | 62 | 19 | 22 |

UC Series 2 In 1 American Type Quick Coupling

Self sealing socket+Thru-type plug



Ordering code

UC20-SF-02B

◆ Universal C series

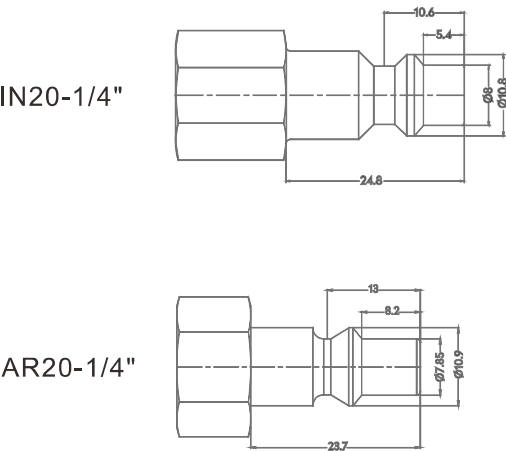
◆ Body size
20: 1/4"

◆ Coupling type
SF: Female socket
SM: Male socket
SH: Hose barb socket
SN: Nut lock socket
PF: Female plug
PM: Male plug
PH: Hose barb plug
PN: Nut lock plug

◆ Thread code
02: 1/4"NPT
03: 3/8"NPT
04: 1/2"NPT

◆ Material code
B: Brass
S: Carbon steel
SS: Stainless steel SUS304/303
A: Aluminum alloy

Plug profile



Compatible with

| | |
|------------|-----------|
| FOKCA | IN20,AR20 |
| INDUSTRIAL | 1/4" |
| PARKER | 20,50 |
| ARO | 210 |
| ORION | 44510 |

Features

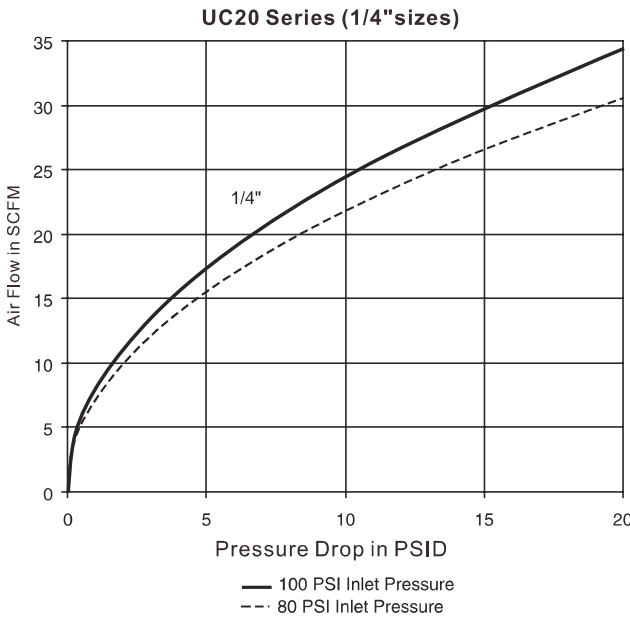
UC20 series quick couplings can be interchanged with ARO210, Parker 20 series Industrial 1/4" series. A female coupler can be compatible with IN20 and AR20 nipples or plugs. The body is made of brass with nickel-plated, and its sleeve is made of aluminum alloy with oxidation treatment. There are a variety of colors to be chosen, by which it is very convenient to distinguish when multiple pipelines are concentrated.

This series of quick couplings adopts a structure of 6 locking balls, which has small size, light weight, lower cost, safe and reliable. The maximum working pressure is 2.0MPa. Its flow characteristics are equivalent to UB20 series. The push-to-connect structure is easy for one-handed operation. Currently It is 1/4" flow rate body available only. If a larger flow rate is required, you are recommended to choose EU20 or IN30, IN40 series.

Specification

| Series | UC20 |
|---------------------|---------------|
| Body Size(in.) | 1/4" |
| Rated Pressure(MPa) | 2.0MPa |
| Temperature Range | -10°C ~ +70°C |
| Locking Device | 6 balls |

Performance



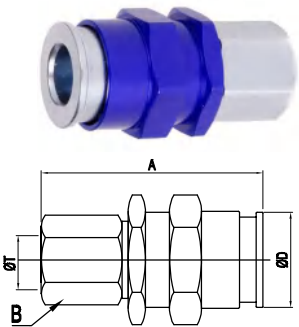
UC Series 2 In 1 American Type Quick Coupling

Self sealing socket+Thru-type plug



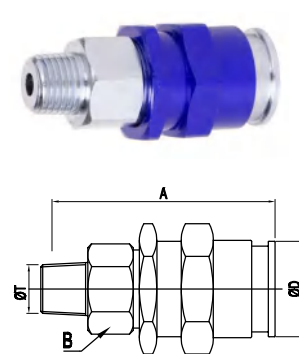
Sockets/Couplers

Female Pipe Thread



| Model | Body Size | Thread -T | Overall (A) | Hex Size (B) | Diameter (D) |
|------------|-----------|-----------|-------------|--------------|--------------|
| UC20-SF-02 | 1/4 | 1/4"NPT | 55 | 19 | 28 |

Male Pipe Thread



| Model | Body Size | Thread -T | Overall (A) | Hex Size (B) | Diameter (D) |
|------------|-----------|-----------|-------------|--------------|--------------|
| UC20-SM-02 | 1/4 | 1/4"NPT | 55 | 19 | 28 |

EU Series European Type Quick Coupling

Self sealing socket+Thru-type plug



Ordering code

EU 20 -SF - 02 B

◆ European series

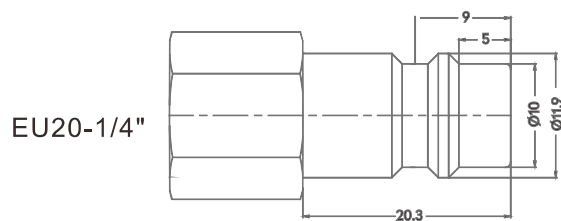
◆ Body size
20: 1/4"

◆ Coupling type
SF: Female socket
SM: Male socket
SH: Hose barb socket
SN: Nut lock socket
PF: Female plug
PM: Male plug
PH: Hose barb plug
PN: Nut lock plug

◆ Thread code
02: 1/4"PT
03: 3/8"PT
04: 1/2"PT

◆ Material code
B: Brass
S: Carbon steel
SS: Stainless steel SUS304/303

Plug profile



Compatible with

| | |
|---------------|---------|
| FOKCA | EU20 |
| PARKER-RECTUS | 25,26 |
| JWL | 520,530 |
| CEJN | 320 |

Features

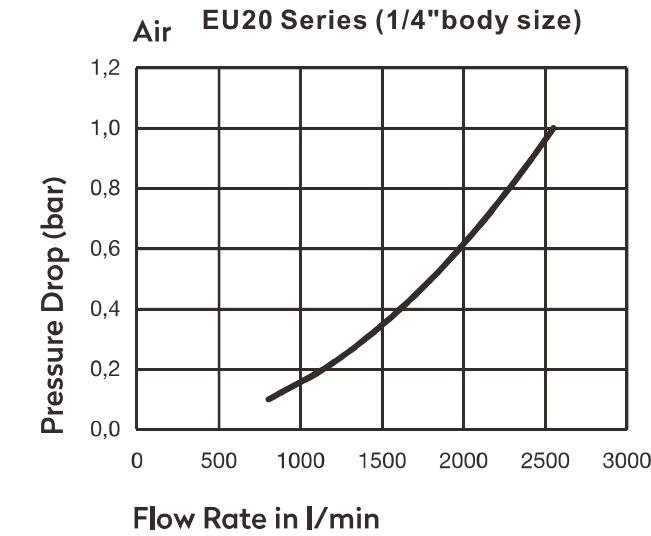
EU20 series European quick coupling can be interchanged with Rectus 25, CEJN320, Parker RF series. Compared with other 1/4" body couplings, EU20 series have about 1.5 times orifice, and the flow rate is much larger than that of other 1/4"body couplings. Usually the valve body is constructed of carbon steel with nickel plated, or brass with acid pickling ,and the sleeve is made of carbon steel with nickel plated. You can also choose a full brass sleeve when the working pressure is lower than 2.0MPa.

This series of quick coupling adopts a structure of 6 pcs Φ 4.0 steel locking balls. It is thick, safe and reliable, with good hand feeling, easy to connect and disconnect. The push-to-connect structure is easy for operation by one hand. The maximum working pressure is 2.0MPa(3.0MPa when steel sleeve and nipple). Currently it is available only for 1/4" flow rate. If needs a larger flow rate, you are recommended to choose TR40, IN40 series.

Specification

| Series | EU20 |
|---------------------|-------------|
| Body Size(in.) | 1/4" |
| Rated Pressure(MPa) | 2.0MPa |
| Temperature Range | -10℃ ~ +70℃ |
| Locking Device | 6 balls |

Performance



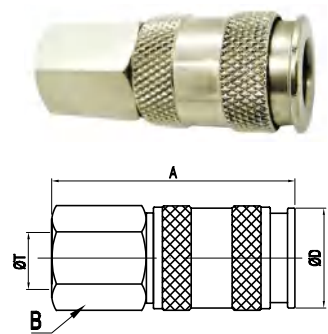
EU Series European Type Quick Coupling

Self sealing socket+Thru-type plug



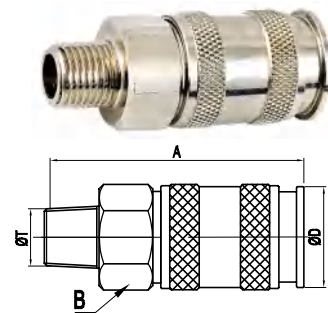
Sockets/Couplers

Female Pipe Thread



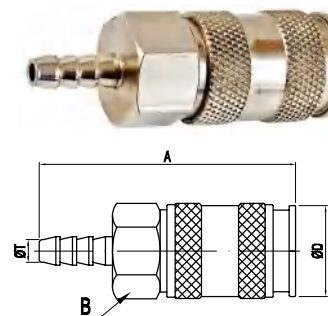
| Model | Body Size | Thread -T | Overall (A) | Hex Size (B) | Diameter (D) |
|------------|-----------|-----------|-------------|--------------|--------------|
| EU20-SF-02 | 1/4 | 1/4"NPT | 55.3 | 20 | 23 |

Male Pipe Thread



| Model | Body Size | Thread -T | Overall (A) | Hex Size (B) | Diameter (D) |
|------------|-----------|-----------|-------------|--------------|--------------|
| EU20-SM-02 | 1/4 | 1/4"NPT | 55 | 20 | 23 |

Standard Hose Barb



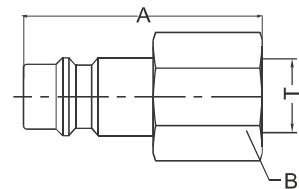
| Model | Body Size | Hose I.D. | Overall (A) | Hex Size (B) | Diameter (D) |
|-------------|-----------|-----------|-------------|--------------|--------------|
| EU20-SH-1/4 | 1/4 | 1/4" | 63 | 20 | 23 |

EU series european type quick coupling

Self sealing socket+Thru-type plug

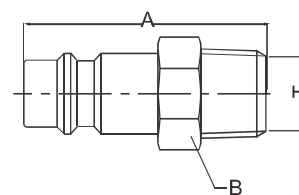
Plugs/Nipples

Female Pipe Thread



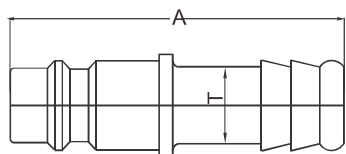
| Model | Body Size | Thread -T | Overall (A) | Hex Size (B) | Diameter (D) |
|------------|-----------|--------------|----------------|-----------------|-----------------|
| EU20-PF-02 | 1/4 | 1/4"NPT | 35 | 14 | |

Male Pipe Thread



| Model | Body Size | Thread -T | Overall (A) | Hex Size (B) | Diameter (D) |
|------------|-----------|--------------|----------------|-----------------|-----------------|
| EU20-PM-02 | 1/4 | 1/4"NPT | 37 | 14 | |

Standard Hose Barb



| Model | Body Size | Hose I.D. | Overall (A) | Hex Size (B) | Diameter (D) |
|-------------|-----------|--------------|----------------|-----------------|-----------------|
| EU20-PH-1/4 | 1/4 | 1/4" | 50 | 14 | |

EE Series European Economical Type Quick Coupling

Self sealing socket+Thru-type plug



Features

EE20 series economical European quick coupling is a variant of EU20, which is smaller in size and lower in cost than EU20. It can be used interchangeably with Rectus 25, CEJN320, Parker RF series. Compared with other 1/4" body couplings, the flow rate of EE20 is also larger than other couplings. Usually the body is made of nickel-plated carbon steel, or brass with acid pickling, and the sleeve is made of carbon steel with nickel-plated. In the case of low working pressure requirements, you can also choose a full brass sleeve.

This series of coupling adopts a structure of 6pcs of Φ3.5mm steel locking balls, which is safe and reliable, easy to connect and disconnect, and the push-to-connect structure is easy for operation by one hand. The maximum working pressure is 1.6 MPa(2.0MPa for steel sleeve and nipples). EE20 currently only has a 1/4" flow valve body. If you need a larger flow joint, it is

Ordering code

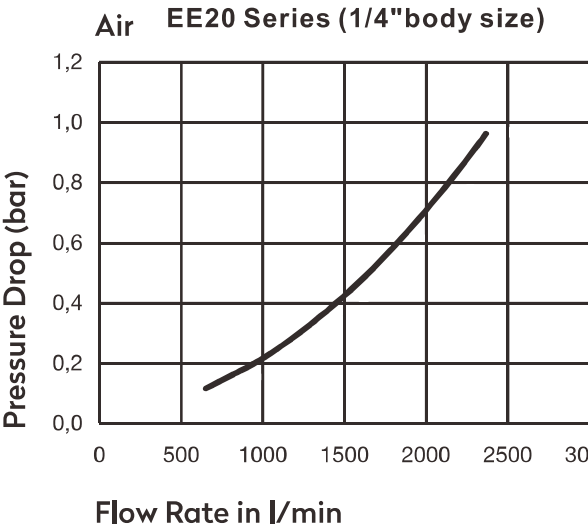
EE 20 - SF - 02 B

- ◆Economical Europe
- ◆Body size
20: 1/4"
- ◆Coupling type
SF: Female socket
SM: Male socket
SH: Hose barb socket
SN: Nut lock socket
PF: Female plug
PM: Male plug
PH: Hose barb plug
PN: Nut lock plug
- ◆Thread code
02: 1/4"PT
03: 3/8"PT
04: 1/2"PT
- ◆Material code
B: Brass
S: Carbon steel
SS: Stainless steel SUS304/303

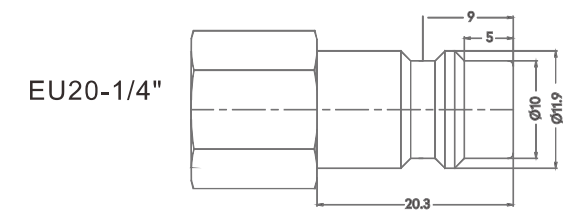
Specification

| Series | EE20 |
|---------------------|---------------|
| Body Size(in.) | 1/4" |
| Rated Pressure(MPa) | 1.6MPa |
| Temperature Range | -10°C ~ +70°C |
| Locking Device | 4 balls |

Performance



Plug profile



Compatible with

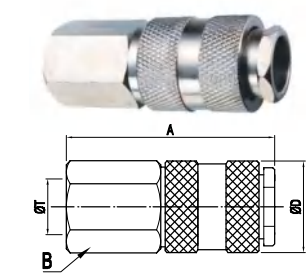
| | |
|---------------|---------|
| FOKCA | EU20 |
| PARKER-RECTUS | 25,26 |
| JWL | 520,530 |
| CEJN | 320 |

EE series european economical type quick coupling

Self sealing socket+Thru-type plug

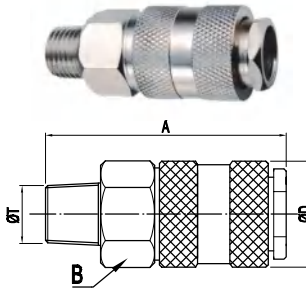
Sockets/Couplers

Female Pipe Thread



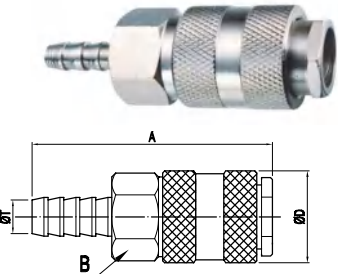
| Model | Body Size | Thread -T | Overall (A) | Hex Size (B) | Diameter (D) |
|------------|-----------|-----------|-------------|--------------|--------------|
| EE20-SF-02 | 1/4 | 1/4"NPT | 52 | 19 | 23 |

Male Pipe Thread



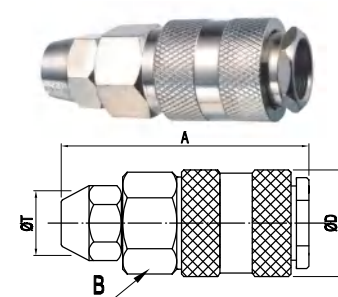
| Model | Body Size | Thread -T | Overall (A) | Hex Size (B) | Diameter (D) |
|------------|-----------|-----------|-------------|--------------|--------------|
| EE20-SM-02 | 1/4 | 1/4"NPT | 55 | 19 | 23 |

Standard Hose Barb



| Model | Body Size | Hose I.D. | Overall (A) | Hex Size (B) | Diameter (D) |
|------------|-----------|-----------|-------------|--------------|--------------|
| EE20-SH-02 | 1/4 | 1/4" | 62 | 19 | 23 |

Nut-lock type



| Model | Body Size | Hose I.D. | Overall (A) | Hex Size (B) | Diameter (D) |
|-------------|-----------|-----------|-------------|--------------|--------------|
| EE20-SN-1/4 | 1/4 | 1/4" | 60 | 19 | 23 |

EM Series European Mini Type Quick Coupling

Self sealing socket+Thru-type plug



Features

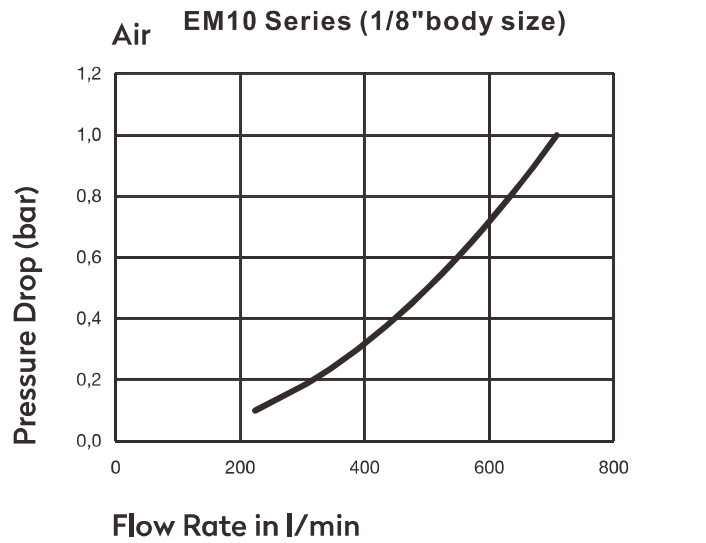
Em10 series mini European style quick coupling can be interchanged with Camozii mini series and Parker-Rectus 21,90 series. Usually the body and sleeve are made of brass with acid pickling, the nipple or plug is made of carbon steel with surface oxidation or nickel plated. The maximum working pressure is 1.0MPa.

This series of coupling adopts a structure of 4 locking steel balls, which is safe and reliable, easy to connect and disconnect. The push-to-connect design is easy for operation by one hand. It is available for for 1/8" flow rate body only, which are generally used in medical equipment, pneumatic tools, or food machinery and other industries.

Specification

| Series | EM10 |
|---------------------|---------------|
| Body Size(in.) | 1/8" |
| Rated Pressure(MPa) | 1.0MPa |
| Temperature Range | -10°C ~ +70°C |
| Locking Device | 4 balls |

Performance

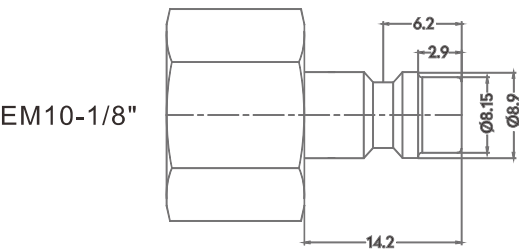


Ordering code

EM 10 - SF - 01 B

- ◆ Mini European series
- ◆ Body size 10: 1/8"
- ◆ Coupling type
SF: Female socket
SM: Male socket
SH: Hose barb socket
SN: Nut lock socket
PF: Female plug
PM: Male plug
PH: Hose barb plug
PN: Nut lock plug
- ◆ Thread code 01: 1/8"BSP
- ◆ Material code
B: Brass
S: Carbon steel
SS: Stainless steel SUS304/303

Plug profile



Compatible with

FOKCA
PARKER-RECTUS
CAMOZZI
LEGRIS

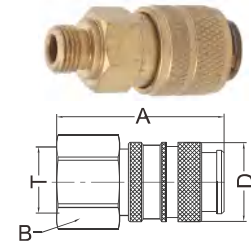
EM20
21,90
MINI SERIE
9200

EM Series European Mini Type Quick Coupling

Self sealing socket+Thru-type plug

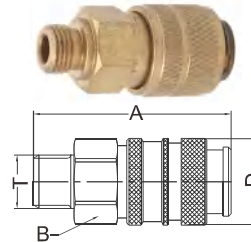
Sockets/Couplers

Female Pipe Thread



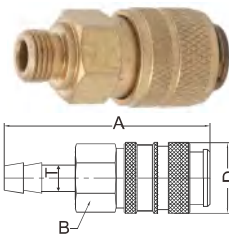
| Model | Body Size | Thread -T | Overall (A) | Hex Size (B) | Diameter (D) |
|------------|-----------|-----------|-------------|--------------|--------------|
| EM10-SF-01 | 1/8 | 1/8"NPT | 38 | 15 | 18 |

Male Pipe Thread



| Model | Body Size | Thread -T | Overall (A) | Hex Size (B) | Diameter (D) |
|------------|-----------|-----------|-------------|--------------|--------------|
| EM10-SM-01 | 1/8 | 1/8"NPT | 38 | 15 | 18 |

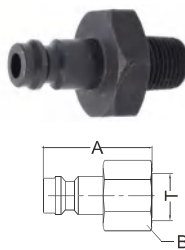
Standard Hose Barb



| Model | Body Size | Hose I.D. | Overall (A) | Hex Size (B) | Diameter (D) |
|-------------|-----------|-----------|-------------|--------------|--------------|
| EM10-SH-1/8 | 1/8 | 1/8" | 45 | 15 | 18 |

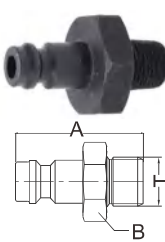
Plugs/Nipples

Female Pipe Thread



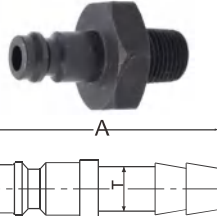
| Model | Body Size | Thread -T | Overall (A) | Hex Size (B) | Diameter (D) |
|------------|-----------|-----------|-------------|--------------|--------------|
| EM20-PF-02 | 1/8 | 1/8"NPT | 39 | 14 | |

Male Pipe Thread



| Model | Body Size | Thread -T | Overall (A) | Hex Size (B) | Diameter (D) |
|------------|-----------|-----------|-------------|--------------|--------------|
| EM20-PM-02 | 1/8 | 1/8"NPT | 39 | 14 | |

Standard Hose Barb



| Model | Body Size | Hose I.D. | Overall (A) | Hex Size (B) | Diameter (D) |
|------------|-----------|-----------|-------------|--------------|--------------|
| EM20-PH-02 | 1/8 | 1/8" | 39 | 14 | |

GE Series German Type Quick Coupling

Self sealing socket+Thru-type plug



Features

GE20 series German type quick couplings can be interchanged with EU20 series, Parker-Rectus 25, 26, CEJN320 series. Like EU20, the flow rate of GE20 series is much larger than other 1/4" body couplings too, and it is compatible with all EU20 series nipples or plugs. Usually the body and sleeve are made of brass with acid pickling, and designed with two locking bars inside instead of locking balls, There are four types to the couplers: female thread, male thread, hose barb tail and nut-lock type.

This series of coupling is thick, safe and reliable, easy to connect and disconnect, push-to-connect sleeve realizes one-handed operation, and the maximum working pressure is 2.0MPa. For regular GE20 seires, it is available for 1/4" flow rate body only. If a larger flow rate is required, we can also provide GE30 and GE40 series.

Ordering code

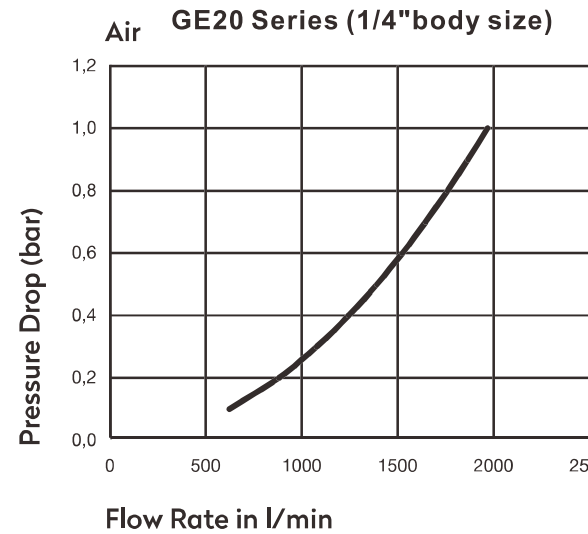
GE 20 - SF - 02 B

- German series
- Body size 20: 1/4"
- Coupling type
SF: Female socket
SM: Male socket
SH: Hose barb socket
SN: Nut lock socket
PF: Female plug
PM: Male plug
PH: Hose barb plug
PN: Nut lock plug
- Thread code
02: 1/4"PT
03: 3/8"PT
04: 1/2"PT
- Material code
B: Brass
S: Carbon steel
SS: Stainless steel SUS304/303

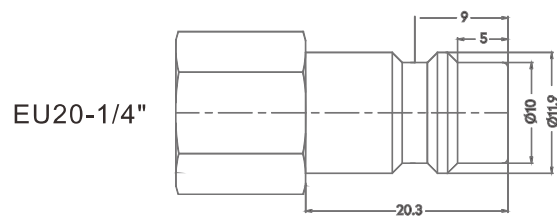
Specification

| Series | GE20 |
|---------------------|---------------|
| Body Size(in.) | 1/4" |
| Rated Pressure(MPa) | 2.0MPa |
| Temperature Range | -10°C ~ +70°C |
| Locking Device | 2 bars |

Performance



Plug profile



Compatible with

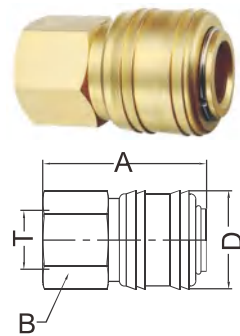
| | |
|---------------|---------|
| FOKCA | EU20 |
| PARKER-RECTUS | 25,26 |
| JWL | 520,530 |
| CEJN | 320 |

GE Series German Type Quick Coupling

Self sealing socket+Thru-type plug

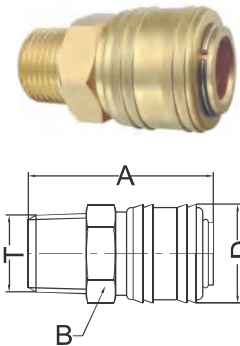
Sockets/Couplers

Female Pipe Thread



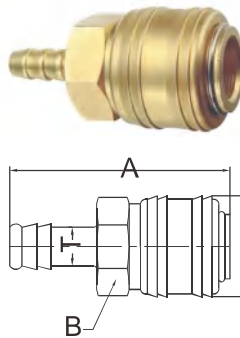
| Model | Body Size | Thread -T | Overall (A) | Hex Size (B) | Diameter (D) |
|------------|-----------|-----------|-------------|--------------|--------------|
| GE20-SF-02 | 1/4 | 1/4"NPT | 40.5 | 21 | 24.5 |

Male Pipe Thread



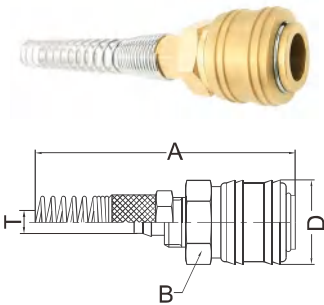
| Model | Body Size | Thread -T | Overall (A) | Hex Size (B) | Diameter (D) |
|------------|-----------|-----------|-------------|--------------|--------------|
| GE20-SM-02 | 1/4 | 1/4"NPT | 39.6 | 21 | 24.5 |

Standard Hose Barb



| Model | Body Size | Hose I.D. | Overall (A) | Hex Size (B) | Diameter (D) |
|-------------|-----------|-----------|-------------|--------------|--------------|
| GE20-SH-1/4 | 1/4 | 1/4" | 54 | 21 | 24.5 |

Push-Lok Hose barb



| Model | Body Size | Hose I.D. | Overall (A) | Hex Size (B) | Diameter (D) |
|-------------|-----------|-----------|-------------|--------------|--------------|
| GE20-SN-1/4 | 1/4 | 1/4" | 41 | 21 | 24.5 |

NT Series Japanese Type Push-to-connect Quickc Coupling

Self sealing socket+Thru-type plug



Features

NT20 series Japanese type quick couplings can be interchanged with NITTO 20, 30, 40 series, Parker-Rectus 13, CEJN315 series. Compatible with all NITTO 20 series nipples or plugs. The body, sleeve and nipples are usually made of carbon steel with chrome-plated, and the element is made of brass. It is equipped with 6 stainless steel locking balls.

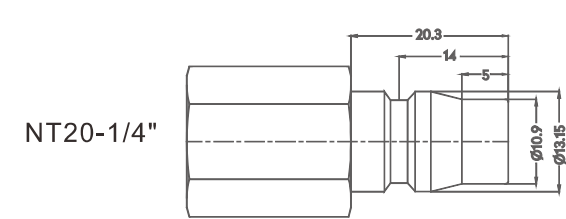
The couplers are mainly divided into four types: female thread, male thread, hose barb tail and nut-lock type. The internal double sealing structure ensures the air tightness without any leakage. This series of coupling adopts a push-to-connect structure, which can be operated with one hand. NT20 series coupling has a large flow rate, is very convenient, safe and reliable. The maximum working pressure is 2.0MPa. At present, it is available for 1/4" body size only. If needs larger flow rate, we can also provide the NT30 and NT40 series.

Ordering code

NT 20 - SF - 02 B

- Japanese self-locking
- Body size 20: 1/4"
- Coupling type
 - SF: Female socket
 - SM: Male socket
 - SH: Hose barb socket
 - SN: Nut lock socket
 - PF: Female plug
 - PM: Male plug
 - PH: Hose barb plug
 - PN: Nut lock plug
- Thread code
 - 02: 1/4"BSP
 - 03: 3/8"BSP
 - 04: 1/2"BSP
- Material code
 - B: Brass
 - S: Carbon steel
 - SS: Stainless steel SUS304/303

Plug profile



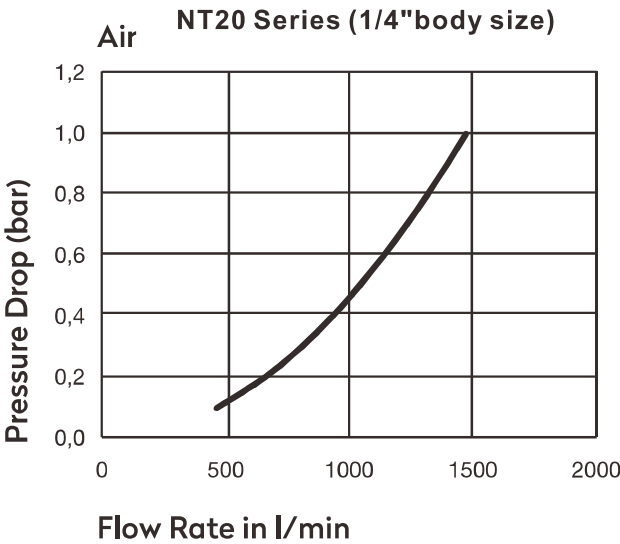
Compatible with

| | |
|---------------|----------|
| FOKCA | NT20 |
| PARKER-RECTUS | 13 |
| NITTO | 20,30,40 |
| CEJN | 315 |

Specification

| Series | NT20 |
|---------------------|---------------|
| Body Size(in.) | 1/4" |
| Rated Pressure(MPa) | 2.0MPa |
| Temperature Range | -10°C ~ +70°C |
| Locking Device | 6 balls |

Performance

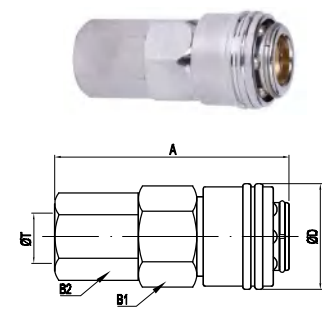


NT Series Japanese Type Push-to-connect Quickc Coupling

Self sealing socket+Thru-type plug

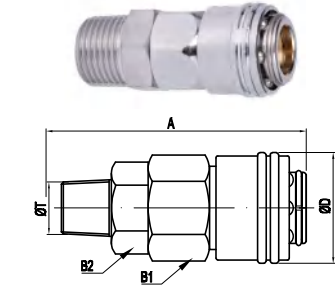
Sockets/Couplers

Female Pipe Thread



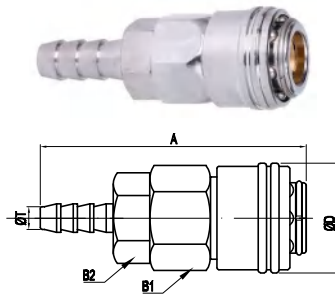
| Model | Body Size | Thread -T | Overall (A) | Hex Size (B1) | Hex Size (B2) | Diameter (D) |
|------------|-----------|-----------|-------------|---------------|---------------|--------------|
| NT20-SF-02 | 1/4 | 1/4"NPT | 59 | 19 | 22 | 26.5 |
| NT20-SF-03 | 1/4 | 3/8"NPT | 59 | 19 | 22 | 26.5 |
| NT20-SF-04 | 1/4 | 1/2"NPT | 60 | 24 | 22 | 26.5 |

Male Pipe Thread



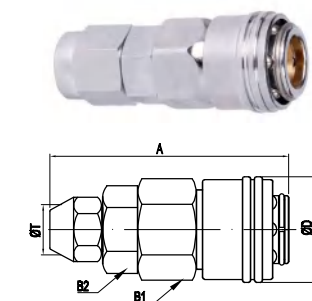
| Model | Body Size | Thread -T | Overall (A) | Hex Size (B1) | Hex Size (B2) | Diameter (D) |
|------------|-----------|-----------|-------------|---------------|---------------|--------------|
| NT20-SM-02 | 1/4 | 1/4"NPT | 58.7 | 19 | 22 | 26.5 |
| NT20-SM-03 | 1/4 | 3/8"NPT | 58.7 | 19 | 22 | 26.5 |
| NT20-SM-04 | 1/4 | 1/2"NPT | 60 | 22 | 22 | 26.5 |

Standard Hose Barb



| Model | Body Size | Hose I.D. | Overall (A) | Hex Size (B1) | Hex Size (B2) | Diameter (D) |
|-------------|-----------|-----------|-------------|---------------|---------------|--------------|
| NT20-SH-1/4 | 1/4 | 1/4" | 72.5 | 19 | 22 | 26.5 |
| NT20-SH-3/8 | 1/4 | 3/8" | 73 | 19 | 22 | 26.5 |
| NT20-SH-1/2 | 1/4 | 1/2" | 76 | 19 | 22 | 26.5 |

Push-Lok Hose barb



| Model | Body Size | Hose I.D. | Overall (A) | Hex Size (B1) | Hex Size (B2) | Diameter (D) |
|-------------|-----------|-----------|-------------|---------------|---------------|--------------|
| NT20-SN-1/4 | 1/4 | 1/4" | 62.5 | 19 | 22 | 26.5 |
| NT20-SN-3/8 | 1/4 | 3/8" | 62.5 | 19 | 22 | 26.5 |
| NT20-SN-1/2 | 1/4 | 1/2" | 66 | 19 | 22 | 26.5 |

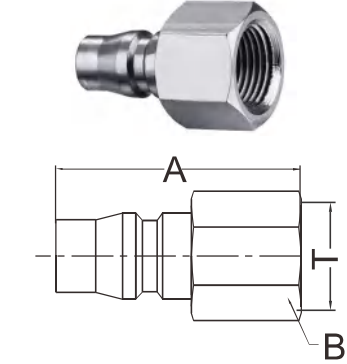
NT Series Japanese Type Push-to-connect Quickc Coupling

Self sealing socket+Thru-type plug



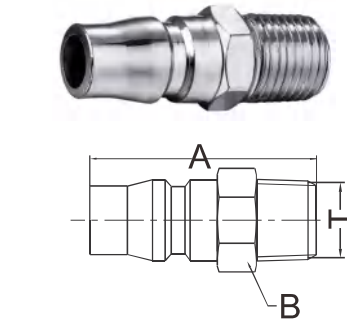
Plugs/Nipples

Female Pipe Thread



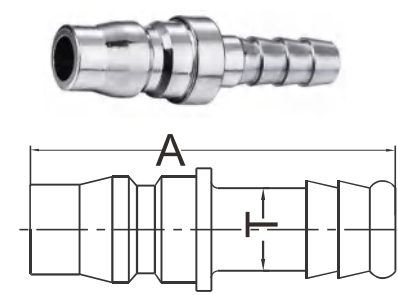
| Model | Body Size | Thread -T | Overall (A) | Hex Size (B) | Diameter (D) |
|------------|-----------|-----------|-------------|--------------|--------------|
| NT20-PF-02 | 1/4 | 1/4"NPT | 36 | 16 | |
| NT20-PF-03 | 1/4 | 3/8"NPT | 38 | 19 | |
| NT20-PF-04 | 1/4 | 1/2"NPT | 46 | 24 | |

Male Pipe Thread



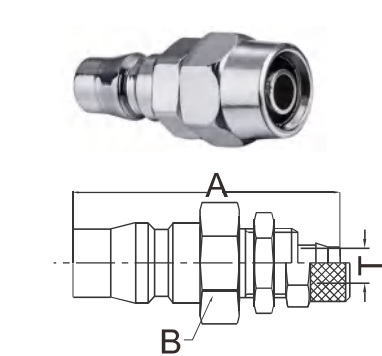
| Model | Body Size | Thread -T | Overall (A) | Hex Size (B) | Diameter (D) |
|------------|-----------|-----------|-------------|--------------|--------------|
| NT20-PM-02 | 1/4 | 1/4"NPT | 39 | 14 | |
| NT20-PM-03 | 1/4 | 3/8"NPT | 40 | 17 | |
| NT20-PM-04 | 1/4 | 1/2"NPT | 51 | 21 | |

Standard Hose Barb



| Model | Body Size | Hose I.D. | Overall (A) | Hex Size (B) | Diameter (D) |
|-------------|-----------|-----------|-------------|--------------|--------------|
| NT20-PH-1/4 | 1/4 | 1/4" | 55 | | 15 |
| NT20-PH-3/8 | 1/4 | 3/8" | 55 | | 15 |
| NT20-PH-1/2 | 1/4 | 1/2" | 57 | | 15 |

Push-Lok Hose barb



| Model | Body Size | Hose I.D. | Overall (A) | Hex Size (B) | Diameter (D) |
|-------------|-----------|-----------|-------------|--------------|--------------|
| NT20-PN-1/4 | 1/4 | 1/4" | 48 | 14 | |
| NT20-PN-3/8 | 1/4 | 3/8" | 48 | 17 | |
| NT20-PN-1/2 | 1/4 | 1/2" | 52 | 21 | |

NM Series Japanese Type Manual-operated Quick Coupling

Self sealing socket+Thru-type plug



Features

NM20 series Japanese economical manual-operated type quick couplings can be interchanged with NT20 series, NITTO 20, 30, 40 series, Parker-Rectus 13, CEJN315 series. Compatible with all NT20 series nipples or plugs. The body, sleeve and nipples are usually made of carbon steel with chrome-plated, and the element is made of steel with nickel plated. It is equipped with 4 stainless steel locking balls.

The couplers are mainly divided into four types: female thread, male thread, hose barb tail and nut-lock type. This series of coupling adopts manual sleeve structure, which requires two-hand operation, simple structure, low cost, high cost performance. The maximum working pressure is 1.0MPa. It is available for 1/4"flow rate body only. If a larger flow rate is required, we can also provide NM30 and NM40 series.

Ordering code

NM

20

-SF

-02

B

◆Japanese Manual

◆Body size

◆Coupling type

◆Thread code

◆Material code

20: 1/4"

30: 3/8"

40: 1/2"

SF: Female socket

SM: Male socket

SH: Hose barb socket

SN: Nut lock socket

PF: Female plug

PM: Male plug

PH: Hose barb plug

PN: Nut lock plug

02: 1/4"BSP

03: 3/8"BSP

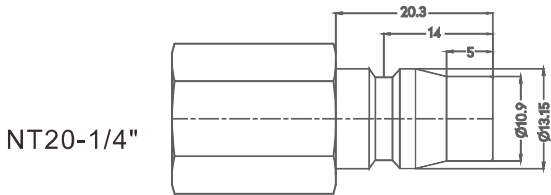
04: 1/2"BSP

B: Brass

S: Carbon steel

SS: Stainless steel SUS304/303

Plug profile



Compatible with

| | |
|---------------|----------|
| FOKCA | NT20 |
| PARKER-RECTUS | 13 |
| NITTO | 20,30,40 |
| CEJN | 315 |

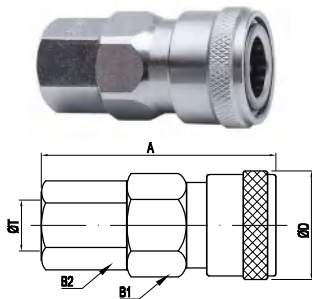
NM Series Japanese Type Manual-operated Quick Coupling

Self sealing socket+Thru-type plug



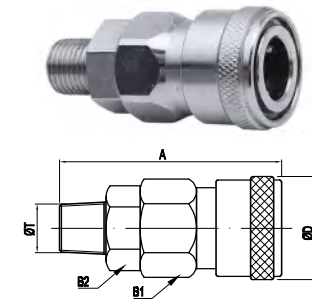
Sockets/Couplers

Female Pipe Thread



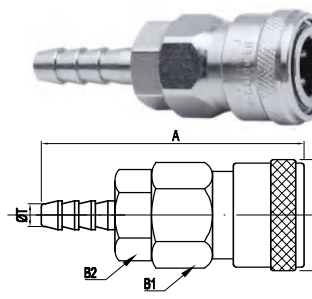
| Model | Body Size | Thread -NPT | Overall (A) | Hex Size (B1) | Hex Size (B2) | Diameter (D) |
|------------|-----------|-------------|-------------|---------------|---------------|--------------|
| NM20-SF-02 | 1/4 | 1/4"NPT | 49.6 | 19 | 22 | 26.6 |
| NM20-SF-03 | 1/4 | 3/8"NPT | 49.6 | 19 | 22 | 26.6 |
| NM20-SF-04 | 1/4 | 1/2"NPT | 59 | 24 | 22 | 26.6 |

Male Pipe Thread



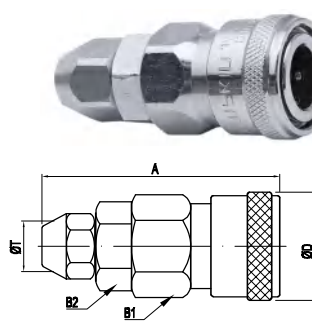
| Model | Body Size | Thread -NPT | Overall (A) | Hex Size (B1) | Hex Size (B2) | Diameter (D) |
|------------|-----------|-------------|-------------|---------------|---------------|--------------|
| NM20-SM-02 | 1/4 | 1/4"NPT | 50.7 | 19 | 22 | 26.6 |
| NM20-SM-03 | 1/4 | 3/8"NPT | 50.7 | 19 | 22 | 26.6 |
| NM20-SM-04 | 1/4 | 1/2"NPT | 56 | 22 | 22 | 26.6 |

Standard Hose Barb



| Model | Body Size | Hose I.D. | Overall (A) | Hex Size (B1) | Hex Size (B2) | Diameter (D) |
|-------------|-----------|-----------|-------------|---------------|---------------|--------------|
| NM20-SH-1/4 | 1/4 | 1/4" | 73 | 19 | 22 | 26.6 |
| NM20-SH-3/8 | 1/4 | 3/8" | 73 | 19 | 22 | 26.6 |
| NM20-SH-1/2 | 1/4 | 1/2" | 76 | 19 | 22 | 26.6 |

Push-Lok Hose barb

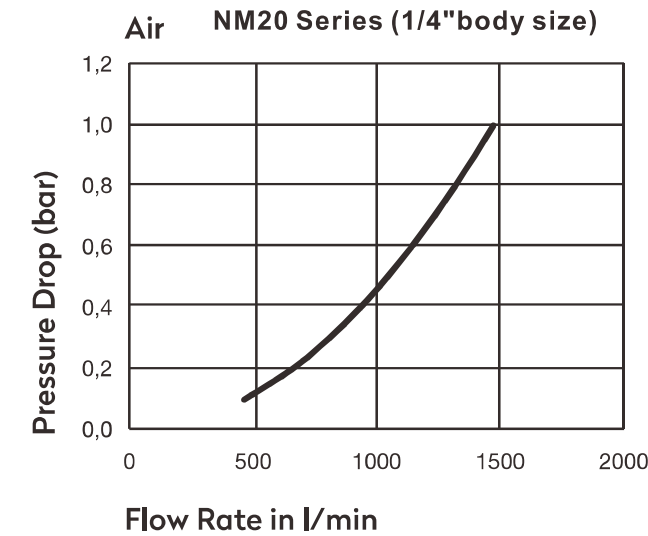


| Model | Body Size | Hose I.D. | Overall (A) | Hex Size (B1) | Hex Size (B2) | Diameter (D) |
|-------------|-----------|-----------|-------------|---------------|---------------|--------------|
| NM20-SN-1/4 | 1/4 | 1/4" | 60 | 19 | 22 | 26.6 |
| NM20-SN-3/8 | 1/4 | 3/8" | 60 | 19 | 22 | 26.6 |
| NM20-SN-1/2 | 1/4 | 1/2" | 64 | 19 | 22 | 26.6 |

Specification

| Series | NM20 |
|---------------------|---------------|
| Body Size(in.) | 1/4" |
| Rated Pressure(MPa) | 1.0MPa |
| Temperature Range | -10°C ~ +70°C |
| Locking Device | 4 balls |

Performance



BR series british type pneumatic quick coupling

Self sealing socket+Thru-type plug



Features

BR20 series British manual-operated type quick couplings can be interchanged with PCL 60 series, Parker-Rectus 19 series. Compatible with all Packer 19 series ferrules. The body, sleeve, and nipples or plugs are usually made of carbon steel with zinc or nickel-plated. It is equipped with 4 stainless steel locking balls.

The couplers are mainly divided into three types: female thread, male thread, and hose barb tail. The body of BR20 series coupler and plug has a long stem, not easy to come off. Manual operation is very simple, safe and reliable, The maximum working pressure is 2.0MPa. At present, the available body size is 1/4" only. If you need a larger flow rate, it is recommended to choose IN30, IN40, series.

Ordering code

BR 20 - SF - 02 B

◆ British series

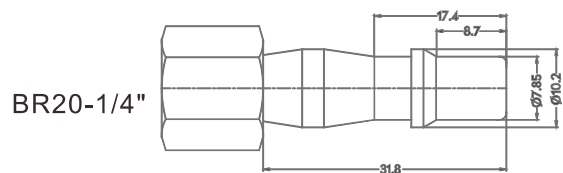
◆ Body size
20: 1/4"

◆ Coupling type
SF: Female socket
SM: Male socket
SH: Hose barb socket
SN: Nut lock socket
PF: Female plug
PM: Male plug
PH: Hose barb plug
PN: Nut lock plug

◆ Thread code
02: 1/4"BSP
03: 3/8"BSP
04: 1/2"BSP

◆ Material code
B: Brass
S: Carbon steel
SS: Stainless steel SUS304/303

Plug profile



Compatible with

| | |
|---------------|------|
| FOKCA | BR20 |
| PARKER-RECTUS | 19 |
| PCL | 60 |

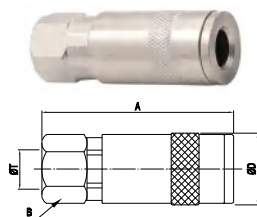
BR series british type pneumatic quick coupling

Self sealing socket+Thru-type plug



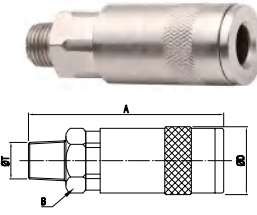
Sockets/Couplers

Female Pipe Thread



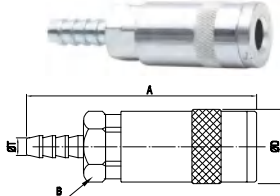
| Model | Body Size | Thread -T | Overall (A) | Hex Size (B) | Diameter (D) |
|------------|-----------|-----------|-------------|--------------|--------------|
| BR20-SF-02 | 1/4 | 1/4"NPT | 67.5 | 19 | 22.6 |

Male Pipe Thread



| Model | Body Size | Thread -T | Overall (A) | Hex Size (B) | Diameter (D) |
|------------|-----------|-----------|-------------|--------------|--------------|
| BR20-SM-02 | 1/4 | 1/4"NPT | 67.5 | 19 | 22.6 |

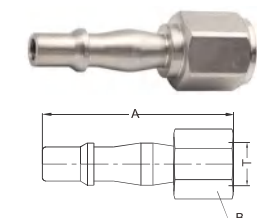
Standard Hose Barb



| Model | Body Size | Hose I.D. | Overall (A) | Hex Size (B) | Diameter (D) |
|-------------|-----------|-----------|-------------|--------------|--------------|
| BR20-SH-1/4 | 1/4 | 1/4" | 86 | 19 | 22.6 |

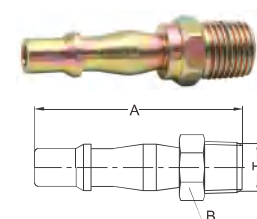
Plugs/Nipples

Female Pipe Thread



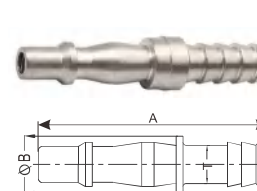
| Model | Body Size | Thread -T | Overall (A) | Hex Size (B) | Diameter (D) |
|------------|-----------|-----------|-------------|--------------|--------------|
| BR20-PF-02 | 1/4 | 1/4"NPT | 50 | 16 | |

Male Pipe Thread



| Model | Body Size | Thread -T | Overall (A) | Hex Size (B) | Diameter (D) |
|------------|-----------|-----------|-------------|--------------|--------------|
| BR20-PM-02 | 1/4 | 1/4"NPT | 48.5 | 14 | |

Standard Hose Barb

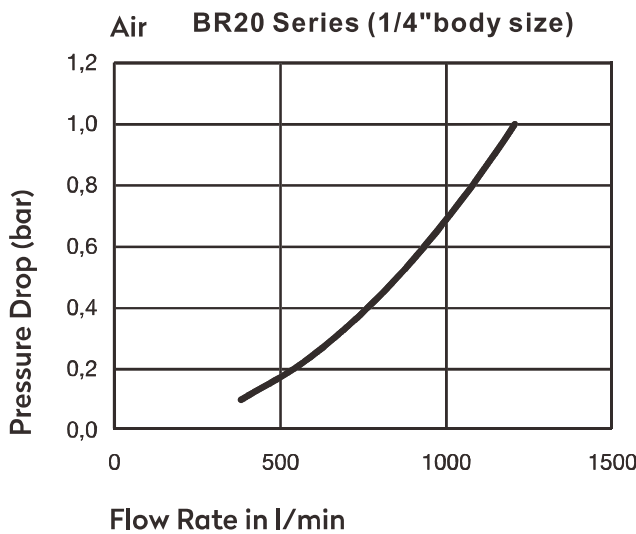


| Model | Body Size | Hose I.D. | Overall (A) | Hex Size (B) | Diameter (D) |
|-------------|-----------|-----------|-------------|--------------|--------------|
| BR20-PH-1/4 | 1/4 | 1/4" | 68 | 14 | |

Specification

| Series | BR20 |
|---------------------|---------------|
| Body Size(in.) | 1/4" |
| Rated Pressure(MPa) | 2.0MPa |
| Temperature Range | -10°C ~ +70°C |
| Locking Device | 4 balls |

Performance



IS Series Israel Type Pneumatic Quick Coupling

Self sealing socket+Thru-type plug



Ordering code

IS20-SF-02S

◆ Israel series

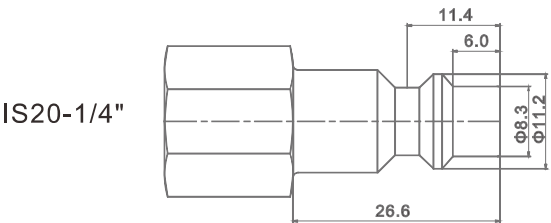
◆ Body size
20: 1/4"

◆ Coupling type
SF: Female socket
SM: Male socket
SH: Hose barb socket
SN: Nut lock socket
PF: Female plug
PM: Male plug
PH: Hose barb plug
PN: Nut lock plug

◆ Thread code
02: 1/4"PT
03: 3/8"PT
04: 1/2"PT

◆ Material code
B: Brass
S: Carbon steel
SS: Stainless steel SUS304/303

Plug profile



Compatible with

FOKCA
PARKER-RECTUS
CEJN

IS20

Features

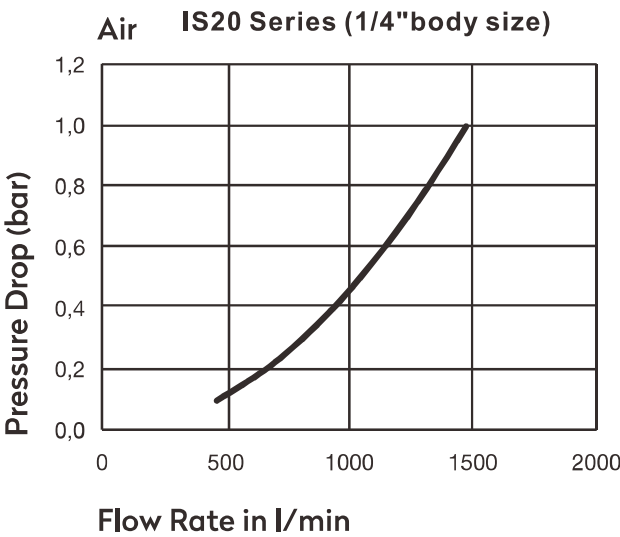
IS20 series Israel manual-operated quick couplings have only 1/4" body size currently. Normally, the body, sleeve and plugs are made of carbon steel with white zinc plated. It is equipped with 4 stainless steel locking steel balls. The couplers are mainly divided into three types: female thread and male thread and hose barb tail.

Please note: The profile of IS20 series nipples is very close to that of IN20 series. They COULD NOT match with each other. For regular IS20 series couplers, the sealing material is NBR. if needs to use in a high temperature, it is recommended to replace its sealing with FKM(viton).

Specification

| Series | BR20 |
|---------------------|-----------|
| Body Size(in.) | 1/4" |
| Rated Pressure(MPa) | 2.0MPa |
| Temperature Range | -10℃~+70℃ |
| Locking Device | 4 balls |

Performance



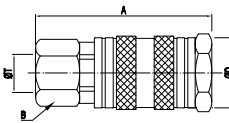
IS Series Israel Type Pneumatic Quick Coupling

Self sealing socket+Thru-type plug



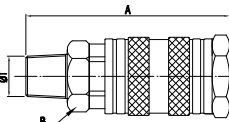
Sockets/Couplers

Female Pipe Thread



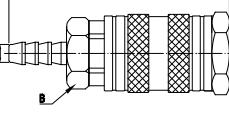
| Model | Body Size | Thread -T | Overall (A) | Hex Size (B) | Diameter (D) |
|------------|-----------|-----------|-------------|--------------|--------------|
| IS20-SF-02 | 1/4 | 1/4"NPT | 65 | 19 | 25.3 |

Male Pipe Thread



| Model | Body Size | Thread -T | Overall (A) | Hex Size (B) | Diameter (D) |
|------------|-----------|-----------|-------------|--------------|--------------|
| IS20-SM-02 | 1/4 | 1/4"NPT | 65 | 19 | 25.3 |

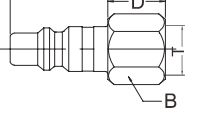
Standard Hose Barb



| Model | Body Size | Hose I.D. | Overall (A) | Hex Size (B) | Diameter (D) |
|-------------|-----------|-----------|-------------|--------------|--------------|
| IS20-SH-1/4 | 1/4 | 1/4" | 75 | 19 | 25.3 |

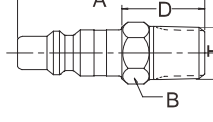
Plugs/Nipples

Female Pipe Thread



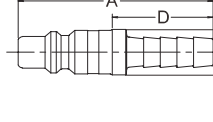
| Model | Body Size | Thread -T | Overall (A) | Hex Size (B) | Diameter (D) |
|------------|-----------|-----------|-------------|--------------|--------------|
| IS20-PF-02 | 1/4 | 1/4"NPT | 47 | 16 | |

Male Pipe Thread



| Model | Body Size | Thread -T | Overall (A) | Hex Size (B) | Diameter (D) |
|------------|-----------|-----------|-------------|--------------|--------------|
| IS20-PM-02 | 1/4 | 1/4"NPT | 46 | 14 | |

Standard Hose Barb



| Model | Body Size | Hose I.D. | Overall (A) | Hex Size (B) | Diameter (D) |
|-------------|-----------|-----------|-------------|--------------|--------------|
| IS20-PH-1/4 | 1/4 | 1/4" | 57 | 14 | |

Pneumatic inspection pen



IP-IN20-B

IP-TR20-B



IP-EU20-Y

IP-AR20-Y



IP-IN20-G

IP-EU20-R

IP-EU20-Y

Color code:

B: Blue
G: Green
Y: Yellow
R: Red

Multiple branch pneumatic quick couplings



MY3-TR20-02B



MY3-TR20-02S



MY3-IM20-02B



MY3-NT20-02S



MY3-NM20-02S



MY3-EE20-02S



ML3-EE20-02S



ML2-EE20-02S



MB-3Y-G02